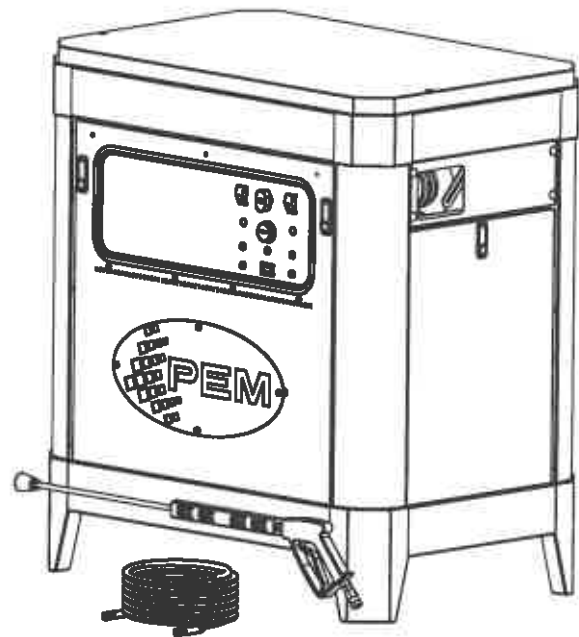
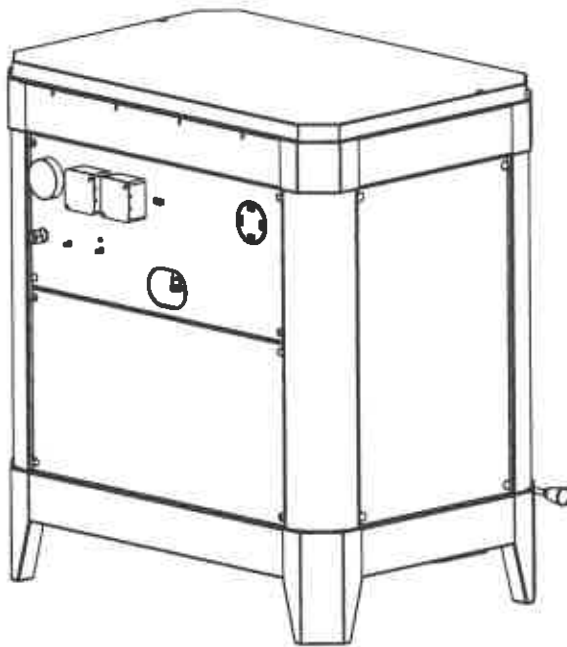


ITEM	NUMBER	DESCRIPTION	QTY.
1	02-522210	POP RIVET 1/8 X 1/8	2
2	26-101005	NAME PLATE PRIVATE LABEL	1
3	B70-0002	HEAT CHAMBER ASS'Y	1
4	C70-0029-1	PUMP ASSY P450-HE 5@1800	1
5	D70-0027	DRIVE ASSY P450 5@1800	1
6	E70-0002	JACKET OUTLET/COIL INLET ASSY	1
7	E70-0004-2	FLOAT TANK PLUMBING ASS'Y	1
8	E70-0005-2	JACKET INLET ASSY	1
9	E70-0035A	WATER INLET ASSY P400 IN SOLN	1
10	E70-0036-1	UNLOADER ASSY P450-HE CLUTCH	1
11	E70-0037	BETA PUMP ASSY	1
12	E70-0038	COIL OUTLET ASSY	1

ITEM	NUMBER	DESCRIPTION	QTY.
13	E70-0061-HD	EXCHANGE 70-SERIES 4" SST TUBE ASSY 4/5/8/10GPM	1
14	EPEM5-0015	GUN/HOSE/TIP ASSY (PEM P-300)	1
15	F70-0305AH	ELEC ASSY P450-HE VAC SWITCH IN SOLN	1
16	F71-0039	SCHEMATIC PANEL P400 PEM NG/LP	1
17	F71-0040BH	SCHEMATIC BOX P450-HE VAC SWITCH IN SOLN	1
18	G70-0001	BURNER ASSY	1
19	G70-0002	EXHAUST ASSY	1
20	I70-0001	DECAL ASSY	1
21	J70-0001	PACKAGING ASSY	1
22	K70-0001	DVD KIT/OPERATION AND REF	1
23	X70-0009C	MATCH. SUB ASSY DOOR & HINGE TOP, BLUE, 4&5 GALLON	1



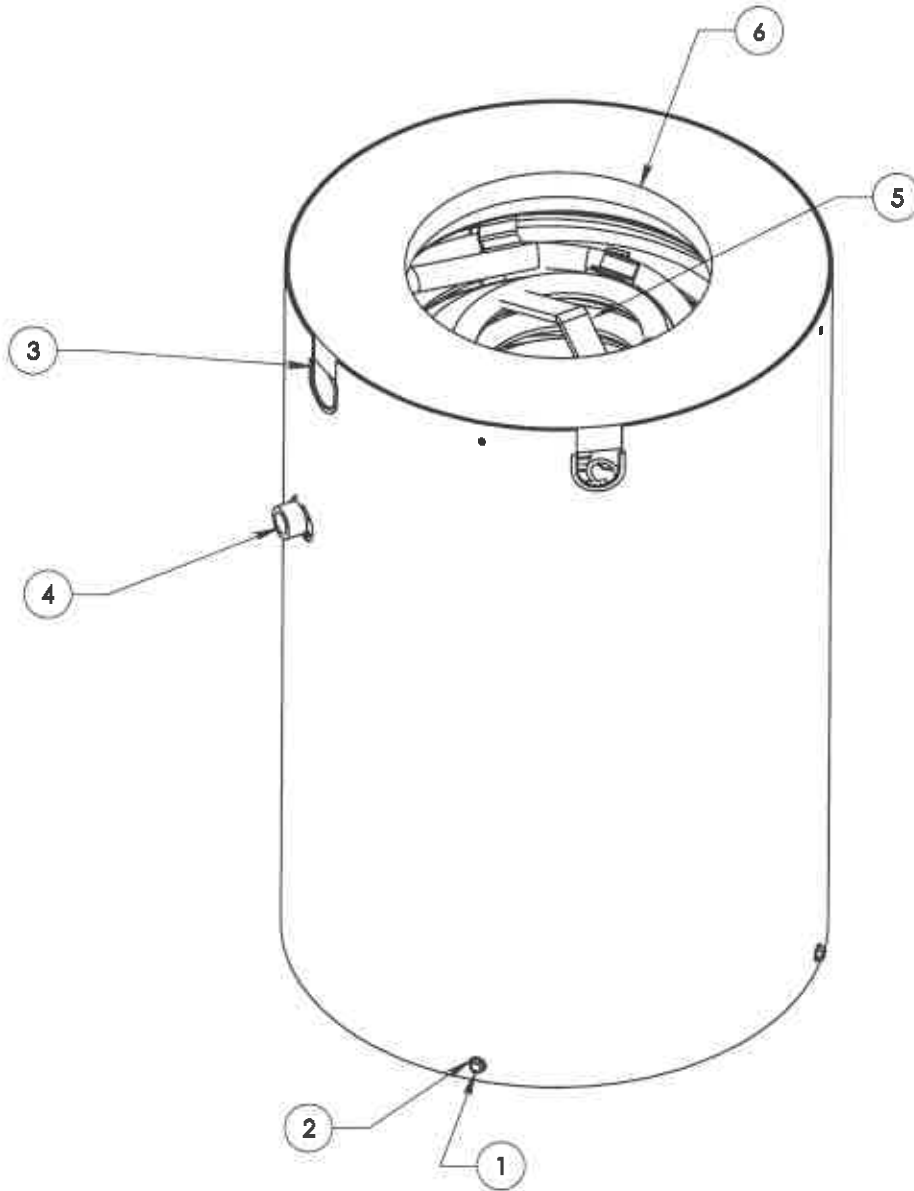
DESCRIPTION:
P450-HE NG CAT DAMPER
IN SOLN

DESCRIPTION 2:
440V 3PH 7.5HP CLUTCH
HWEIGN

DRAWN BY:
BH
DATE:
6/10/2022

DRAW #:
APEM71-0005EH

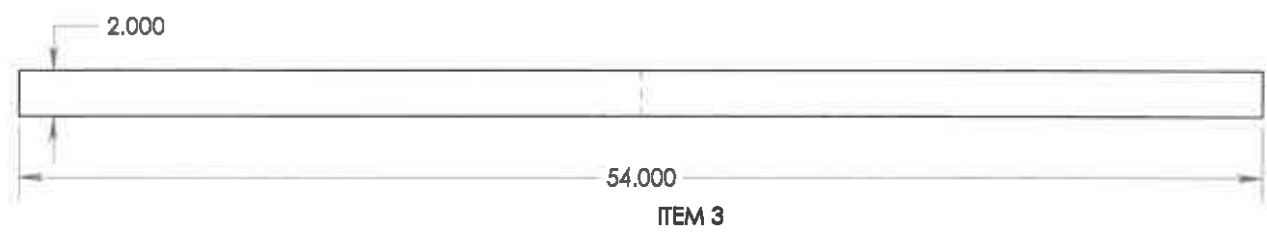
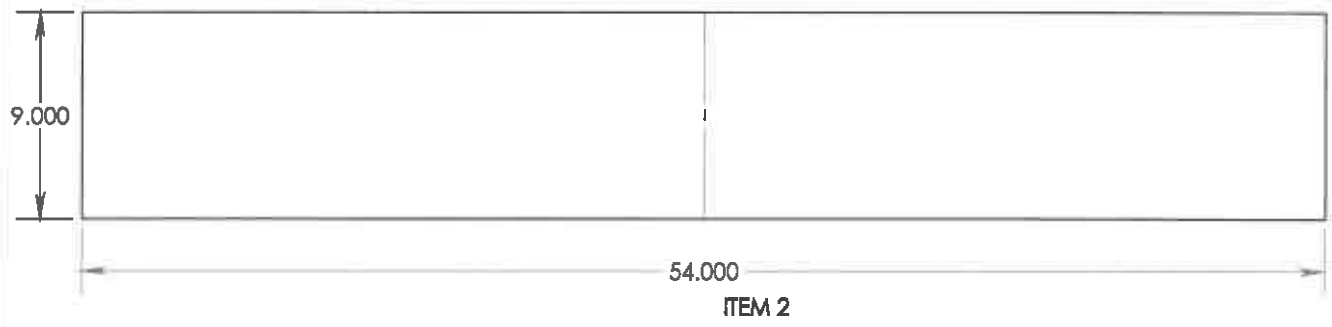
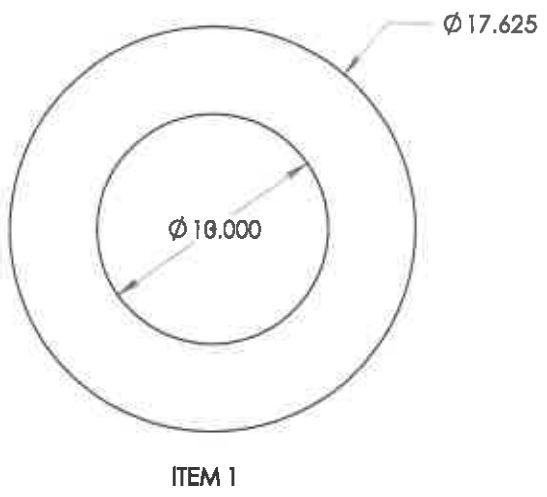
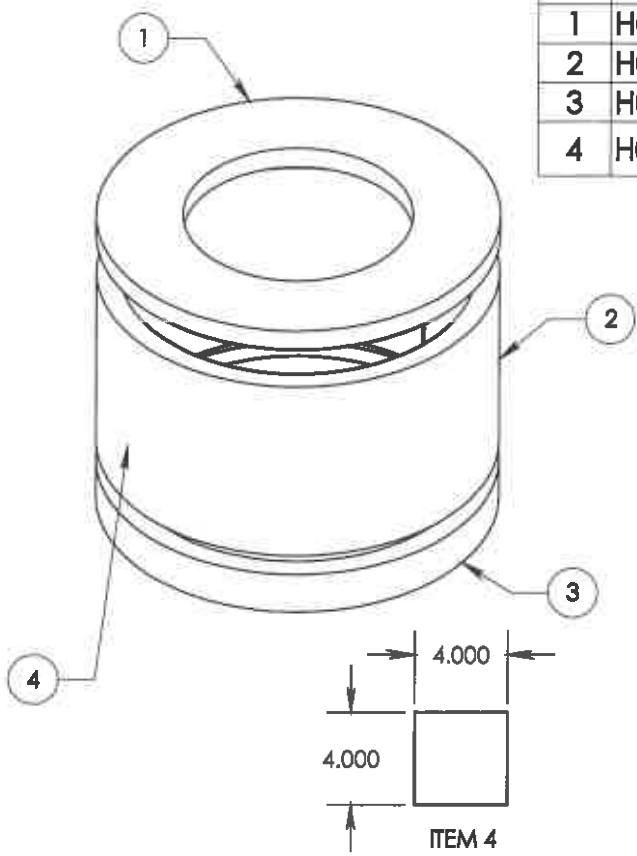
ITEM	NUMBER	DESCRIPTION	QTY.
1	02-101600	SCREW 1/4"-14 x 3/4" KWIK	4
2	02-501202	WASHER 5/16" STAR	4
3	1903-4	VINYL EDGING: 3/8"	2
4	B01-0050	WRAPPER 27" W/ CWWRAP	1
5	b01-0257	COIL - 8 WRAP GAS SCH 80	1
6	k01-0048	INSUL KIT GAS 27" ASSY	1



REV.	DESCRIPTION	ECR/ECN	DATE	BY
A	ADDED 1903-4	ECR-2015-24	3/10/15	LG

DESCRIPTION:	HEAT CHAMBER ASSY
DESCRIPTION 2:	CR NG 27"
DRAWN BY:	BH
DATE:	7/19/2011
DRAW #:	B70-0002

ITEM	PART NUMBER	DESCRIPTION	QTY.
1	H01-0014	STACK HEAD RING 18/10	1
2	H01-0021	C.W. WRAP, TOP 27" GAS	1
3	H01-0022	C.W.W. BOTTOM 27/30 GAS	1
4	H01-0028	COLD WATER OUTLET PACKING	1



REV.	DESCRIPTION	DATE	BY
A	CONVERTED TO SOLIDWORKS	3/23/2011	BH
REVISIONS			

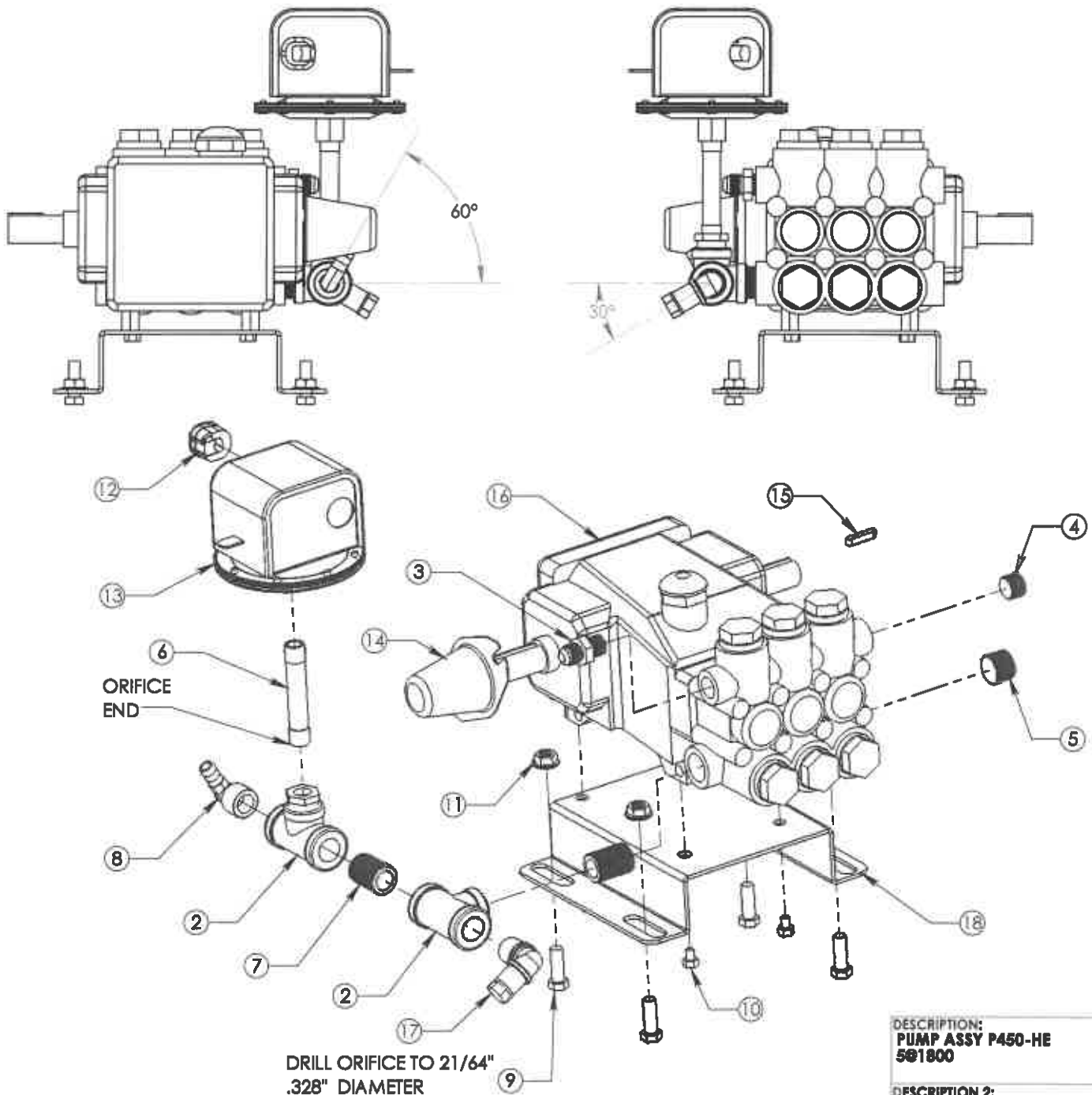
DESCRIPTION:
 INSUL KIT GAS 27"
 ASSY
DESCRIPTION 2:

DRAW #:
 K01-0048

DRAWN BY: DH
 REV: C
 DATE: 2/28/2000
 SHEET 1 OF 1

ITEM	NUMBER	DESCRIPTION	QTY.
1	01-101403	BUSH: 1/2 x 1/4 HEX GALV	1
2	01-161303	TEE, 1/2" STEEL, ZINC	2
3	01-221424	CONNECTOR: 3/8" JIC X 3/8" MPT	1
4	01-231207	PLUG, 3/8", ALLEN HEAD, ZINC	1
5	01-231301	PLUG, 1/2", SQ HEAD, ZINC	1
6	01-261405-1	NIPPLE 1/4"X3" ORFICE	1
7	01-281003	NIPPLE, CLOSE, 1/2", ZINC	2
8	01-411601	HOSE BARB 1/2 X 3/8 X 90	1
9	02-121200	HEX CAP SCREW: 5/16-18 x 1	4

ITEM	NUMBER	DESCRIPTION	QTY.
10	02-191010	HEX CAP SCREW	4
11	02-301200	5/16-18 ZINC SERRATED NUT	4
12	03-192000	CONNECTOR "K" ST BLACK	1
13	04-101320	JETTER VAC SWITCH 1/4"	1
14	08-120921	SHAFT PROTECTOR 3CP1120	1
15	08-121157	PULLEY KEY	1
16	08-129400	PUMP: CAT 5CP3120	1
17	E01-0003-3J	HOSE BARB ORFICE 90 DEG 1/2" X 5/8" BRASS	1
18	b70-0243	PUMP STAND	1



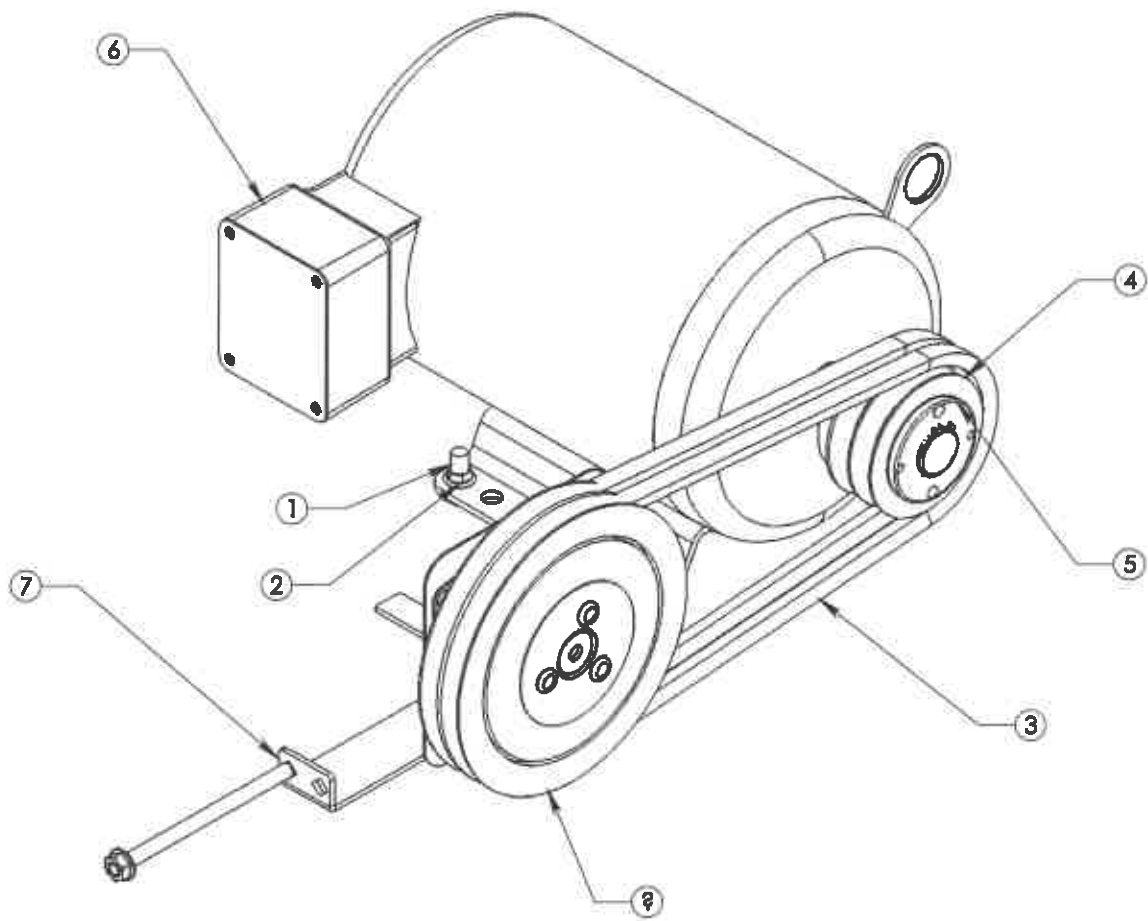
DRILL ORIFICE TO 21/64" .328" DIAMETER

DESCRIPTION:
PUMP ASSY P450-HE
501800

DESCRIPTION 2:
7.5HP 3PH CAT CLUTCH
VAC SWITCH

DRAWN BY: BH
DATE: 03/12/2021
DRAW #:
C70-0029-1

ITEM	NUMBER	DESCRIPTION	QTY.
1	02-131200	CAP SCREW: 3/8"-16 x 1"	4
2	02-301300	3/8 NUT SERRATED	4
3	07-123700	V BELT AX37	2
4	07-233900	PULLEY V., 2AK39H	1
5	07-301600	BUSHING H x 1 1/8"	1
6	09-112003	MTR: 7.5HP 3 PH 3450 RPM	1
7	E01-0368-2	T-BELT TIGHTENER B01-0668	1
8	E04-0373-1	CAT CLUTCH ASSEMBLY	1



REV.	DESCRIPTION	ECR/ECN	DATE	BY
A	07-123700 WAS 07-123600		1/24/13	LG
REVISIONS				

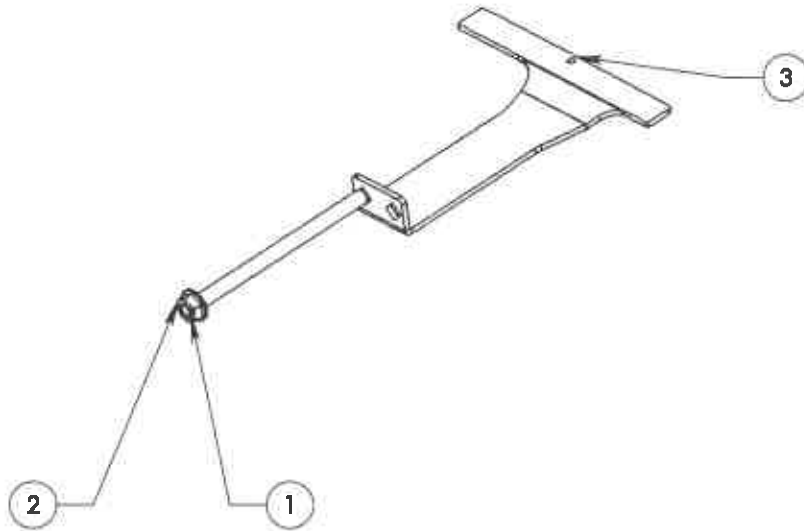
DESCRIPTION:
DRIVE ASSY P450 501800

DESCRIPTION 2:
7.5HP 3PH CAT CLUTCH

DRAWN BY:
NS
DATE:
9/12/2012

DRAW #:
D70-0027

ITEM	NUMBER	DESCRIPTION	QTY.
1	02-121216	CARRIAGE BOLT 5/16"X18X 5 1/2	1
2	02-301200	5/16-18 ZINC SERRATED NUT	1
3	B01-0668	8" BELT TIGHTENER BRACKET	1



DESCRIPTION:
T-BELT TIGHTENER B01-0668

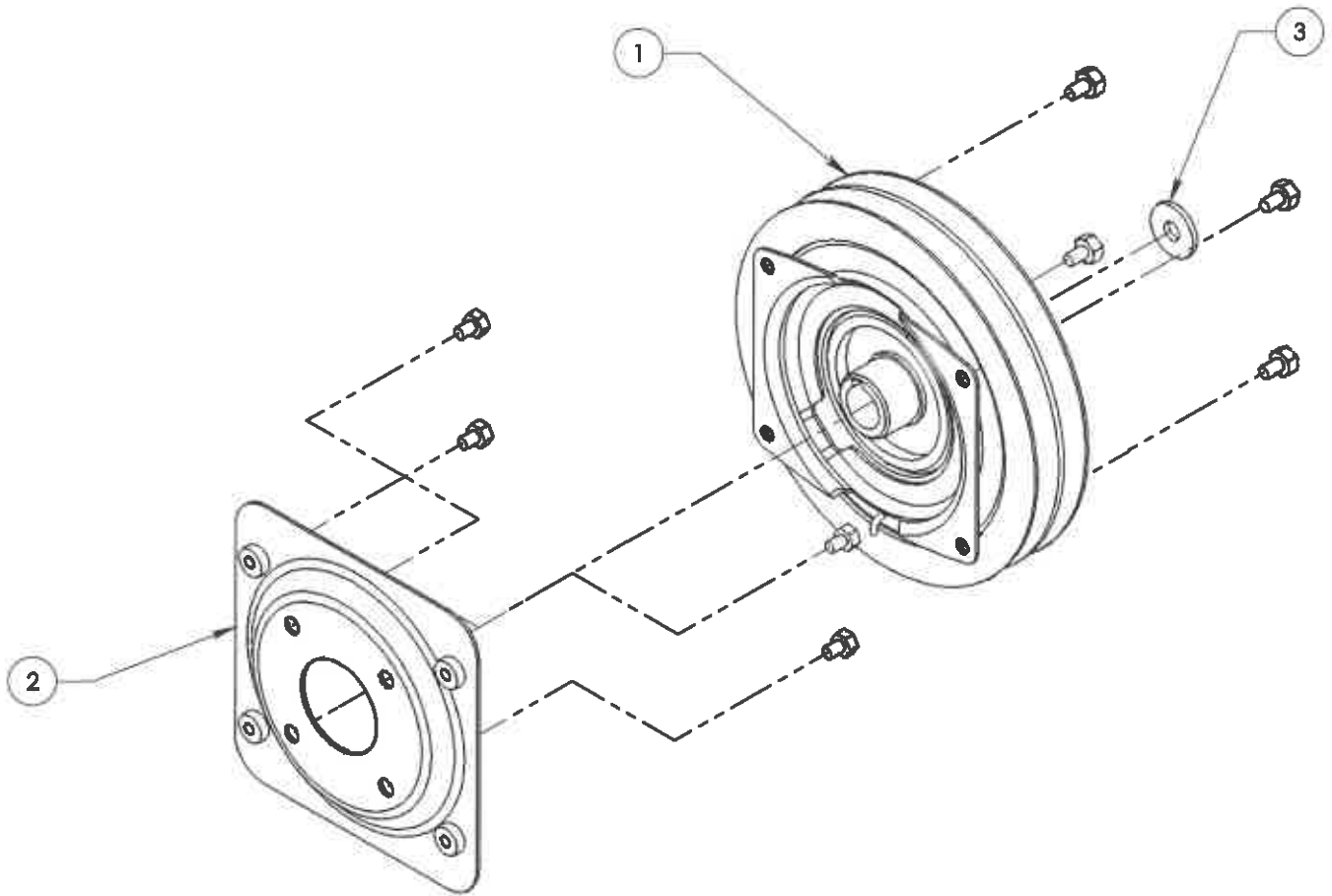
DESCRIPTION 2:
CARRIAGE BOLT 5/16"x18 x 5 1/2"

DRAW #:
E01-0368-2

REV.	DESCRIPTION	ECR/ECN	DATE	BY
REVISIONS				

DRAWN BY: NS
DATE: 09/19/12
SHEET 1 OF 1

ITEM	NUMBER	DESCRIPTION	QTY.
1	I-07-161001	CLUTCH ASSEMBLY 2 GROOVE 24V 20MM	1
2	07-161017	CLUTCH PLATE	1
3	B04-3337	CLUTCH WASHER	1

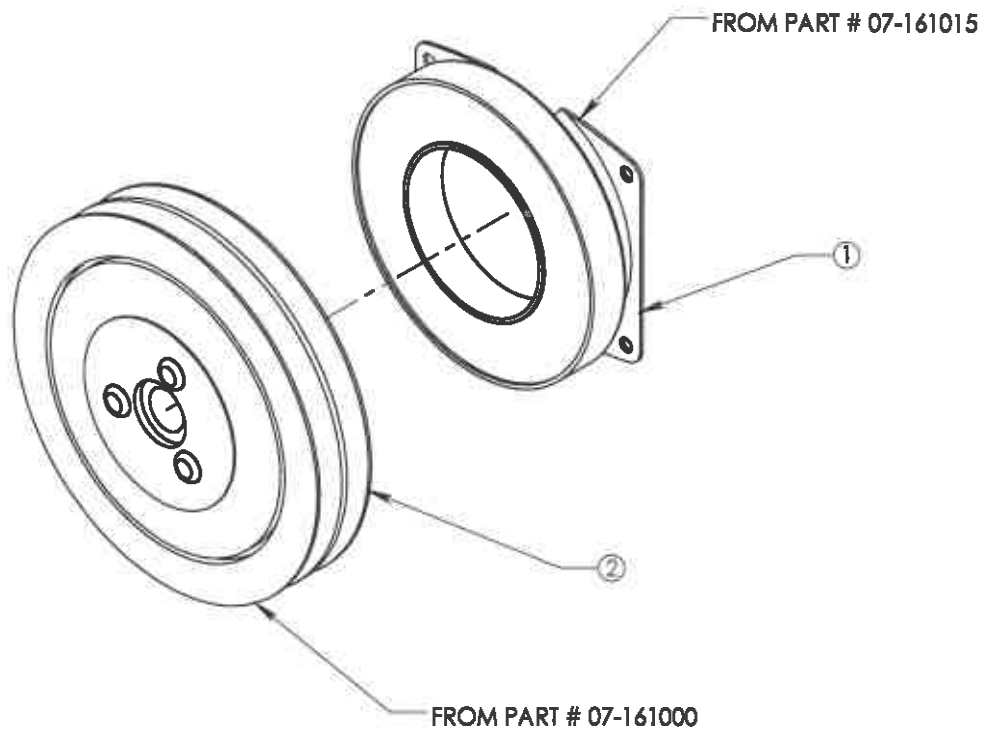


REV.	DESCRIPTION	ECR/ECN	DATE	BY
A	I-07-161001 WAS 07-161001		1/30/2014	HS

REVISIONS

DESCRIPTION:	CAT CLUTCH ASSEMBLY
DESCRIPTION 2:	24V
DRAW #:	E04-0373-1
DRAWN BY:	NS
DATE:	02/07/11
REV:	B
SHEET	1 OF 1

ITEM	NUMBER	QTY.
1	CLUTCH COIL 24V	1
2	CLUTCH 2 GROOVE 12V 20MM	1



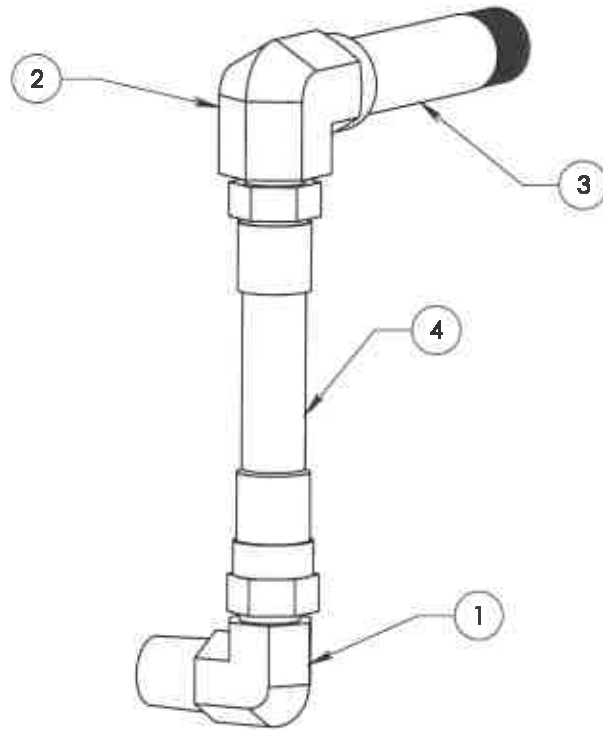
DESCRIPTION:
**CLUTCH ASSEMBLY 2
 GROOVE 24V 20MM**

DESCRIPTION 2:

DRAWN BY:
 NS
 DATE:
 2/23/2016

DRAW #:
1-07-161001

ITEM	NUMBER	DESCRIPTION	QTY.
1	01-111313	ELBOW: 1/2" JIC X 1/2" MPT	1
2	01-111314	ELBOW: 1/2" JIC X 1/2" FPT	1
3	01-281604	NIPPLE, HD, 1/2 X 4" ZINC	1
4	11-132202	3/8 HOSE: IMPAC4000 - 22"	1



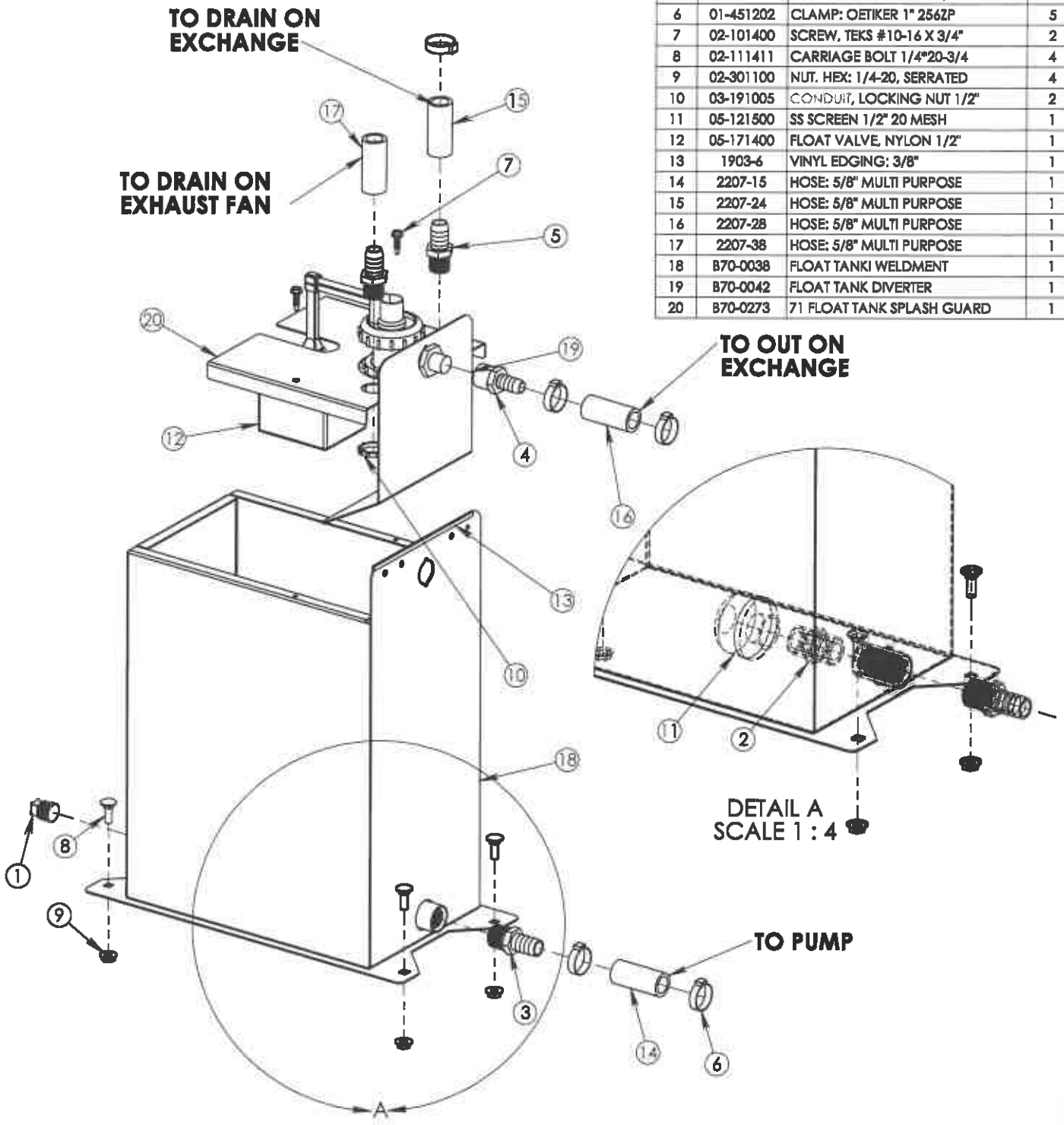
DESCRIPTION:
 JACKET OUTLET/
 COIL INLET ASS'Y
 DESCRIPTION 2:

REV.	DESCRIPTION	ECR/ECN	DATE	BY
REVISIONS				

DRAWN BY: BH
 DATE: 9/9/2011
 REV: - SHEET 1 OF 1

DRAW #:
E70-0002

ITEM	NUMBER	DESCRIPTION	QTY.
1	01-231203	PLUG, 3/8", SQ HEAD, ZINC	1
2	01-281005	NIPPLE, PLASTIC 1/2 X 1/2	1
3	01-411600	HOSE BARB, 1/2" NPT X 5/8"	1
4	01-411605	HOSE BARB 1/2 FNPT X 5/8"	1
5	01-411606	HOSE BARB 1/2 MPT X 5/8 BARB	2
6	01-451202	CLAMP: OETIKER 1" 2562P	5
7	02-101400	SCREW, TEKS #10-16 X 3/4"	2
8	02-111411	CARRIAGE BOLT 1/4"20-3/4	4
9	02-301100	NUT, HEX: 1/4-20, SERRATED	4
10	03-191005	CONDUIT, LOCKING NUT 1/2"	2
11	05-121500	SS SCREEN 1/2" 20 MESH	1
12	05-171400	FLOAT VALVE, NYLON 1/2"	1
13	1903-6	VINYL EDGING: 3/8"	1
14	2207-15	HOSE: 5/8" MULTI PURPOSE	1
15	2207-24	HOSE: 5/8" MULTI PURPOSE	1
16	2207-28	HOSE: 5/8" MULTI PURPOSE	1
17	2207-38	HOSE: 5/8" MULTI PURPOSE	1
18	B70-0038	FLOAT TANKI WELDMENT	1
19	B70-0042	FLOAT TANK DIVERTER	1
20	B70-0273	71 FLOAT TANK SPLASH GUARD	1



REV.	DESCRIPTION	ECR/ECN	DATE	BY
D	REMOVED GROMMETS; ADDED HOSE BARBS & CONDUIT NUTS; CORRECTED HOSES AND VINYL EDGE LENGTHS		2/26/2016	BH
	REVISIONS			

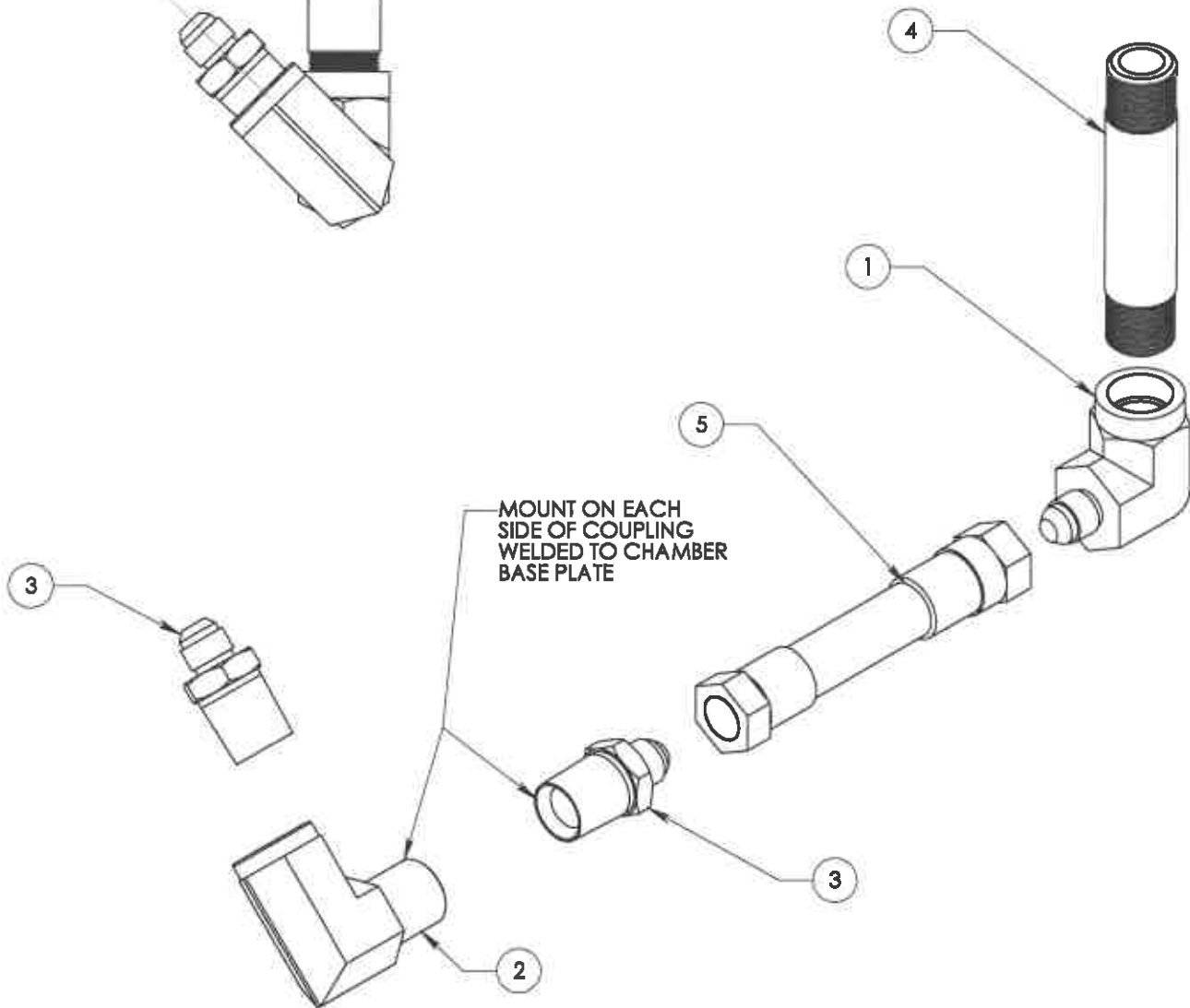
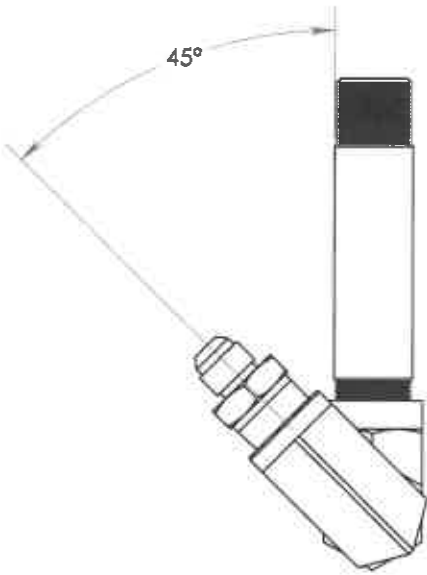
DESCRIPTION:
FLOAT TANK PLUMBING ASSY

DESCRIPTION 2:
PEM

DRAWN BY: LG
 DATE: 1/25/2013

DRAW #
E70-0004-2

ITEM	NUMBER	DESCRIPTION	QTY.
1	01-111213	ELBOW: 3/8" JIC X 1/2" FPT	1
2	01-131304	ELBOW, ST. H.D 1/2 X 90	1
3	01-221421	CONNECTOR: 3/8" JIC X 1/2" MPT	2
4	01-281604	NIPPLE, HD, 1/2 X 4" ZINC	1
5	11-131101	3/8 HOSE: IMPAC4000 - 11"	1



REV.	DESCRIPTION	ECR/ECN	DATE	BY
C	45° WAS 15°		11/19/15	LG
B	11-131101 WAS 11-131301		2/5/15	LG
A	11-131301 WAS 11-131101, CHANGED DUE TO FIT ISSUES	ECR-2013-114	12/31/2013	NS

REVISIONS

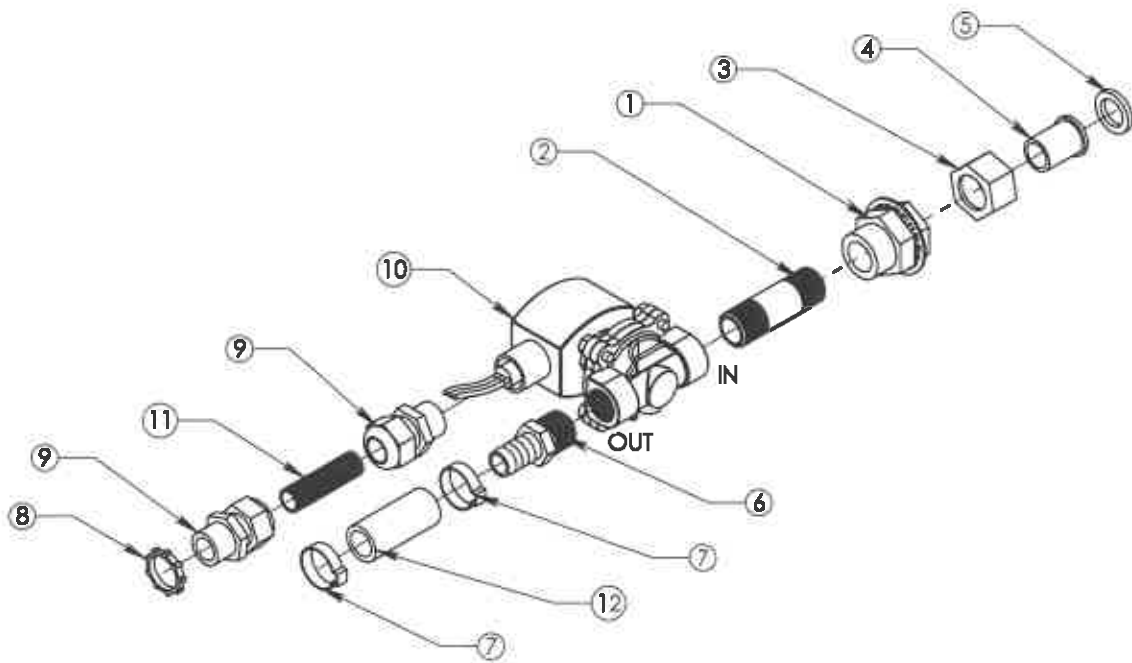
DRAWN BY: NS
DATE: 10/28/2013

DESCRIPTION:
JACKET INLET ASSY

DESCRIPTION 2:
71 SERIES

DRAW #: **E70-0005-2**

ITEM	NUMBER	DESCRIPTION	QTY.
1	01-103001	WEATHER HEAD: 1/2" BRASS	1
2	01-281403	NIPPLE, 1/2" X 3", SCH 40	1
3	01-401000	GRDN HSE ADPTR NUT 3/4"	1
4	01-401010	GARDEN HOSE ADAP, SWV 1/2"	1
5	01-401020	HOSE WASHER, 3/4" GHT	1
6	01-411600	HOSE BARB, 1/2" NPT X 5/8"	1
7	01-451202	CLAMP: OETIKER 1" 256ZP	2
8	03-191005	CONDUIT, LOCKING NUT 1/2"	1
9	03-192520	HEYCO CONN. 3200 1/2"	2
10	05-131404	SOLENOID, VALVE 24V(AC) 1/2"	1
11	2120-18	SPLIT LOOM 3/8" POLY	1
12	2207-19	HOSE 5/8" MULTI PURPOSE	1



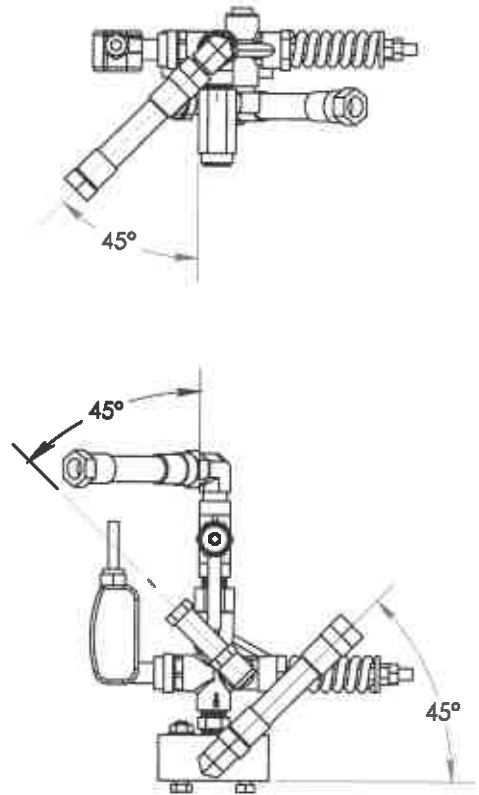
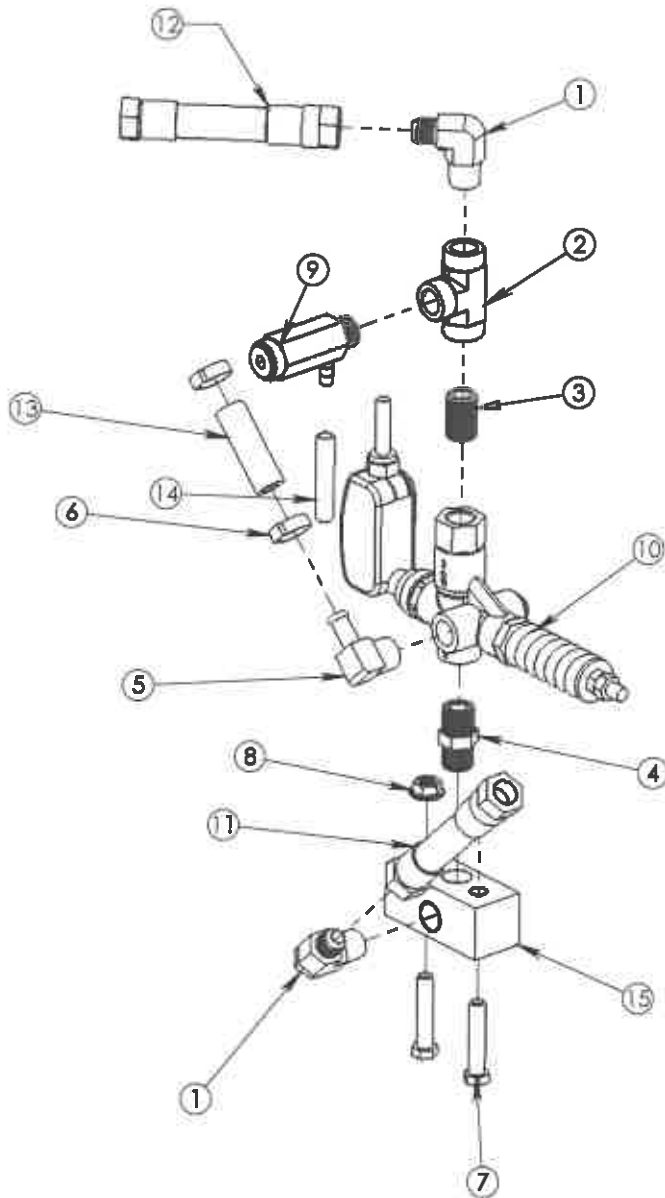
DESCRIPTION:
**WATER INLET ASS'Y P400 IN
 SOLN**

DESCRIPTION 2:

DRAWN BY:
 NS
 DATE:
 1/7/2016

DRAW #:
E70-0035A

ITEM	NUMBER	DESCRIPTION	QTY.
1	01-111211	ELBOW: 3/8" JIC X 3/8" MPT	2
2	01-161204	TEE, 3/8" HD, ZINC, STEEL	1
3	01-271004	NIPPLE, CLOSE, 3/8", SCH 80, ZINC	1
4	01-271104	NIPPLE, HD, 3/8" X 1 1/2" ZINC	1
5	01-411409	HOSEBARB 3/8 MNPT X 3/8 90 DEG	1
6	01-451006	CLAMP: OETIKER	2
7	02-121500	CAPSCREW 5/16"-18 x 1 3/4 ZINC	2
8	02-301200	5/16-18 ZINC SERRATED NUT	2
9	05-111315	RELIEF VALVE ORANGE 3000 PSI	1
10	05-187700	UNLOADER: AR VRT3-250PS6	1
11	11-131301	3/8 HOSE: IMPAC4000 - 13"	1
12	11-132002	3/8 HOSE: 3/8" JIC x 3/8" JIC	1
13	2204-24	HOSE: 3/8" MULTI PURPOSE	1
14	2211-28	HOSE: 1/4" POLY BRAID	1
15	104-0074-1	MANIFOLD BLOCK 3/8"	1



DESCRIPTION:
UNLOADER ASSY P450-HE
CLUTCH

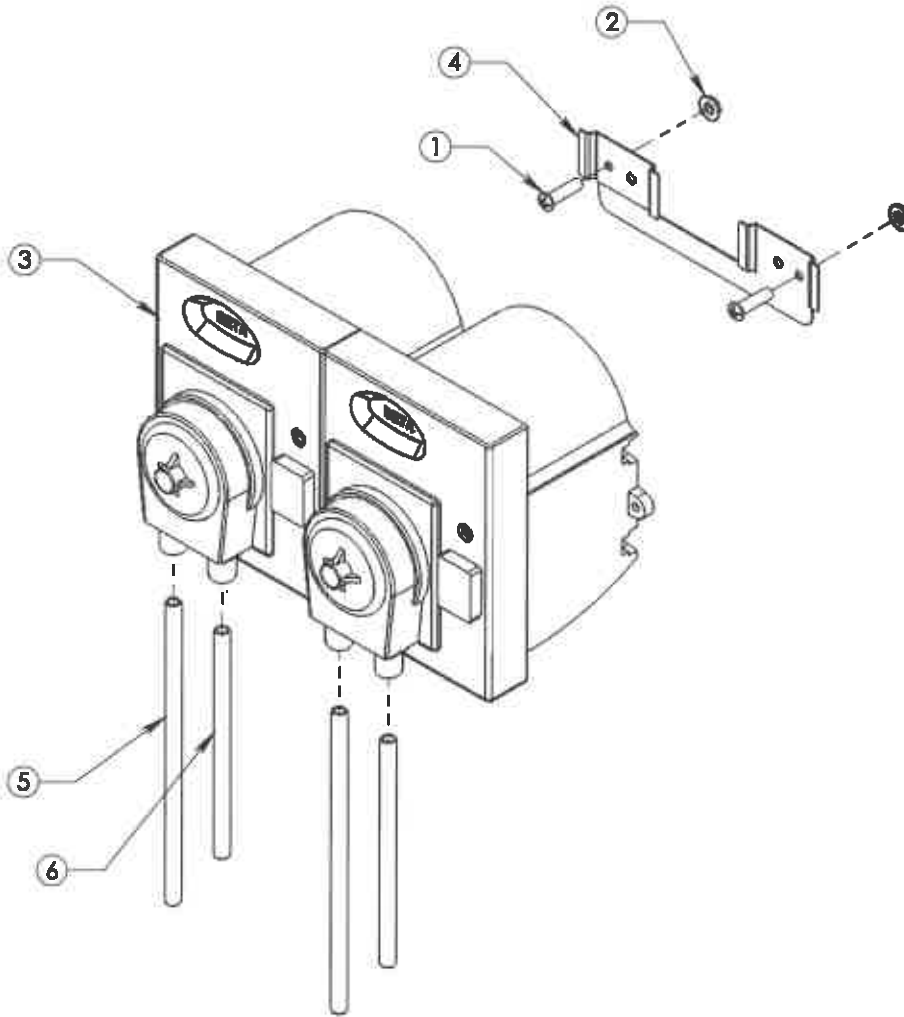
DESCRIPTION 2:
(VAC SWITCH ON PUMP)

A	RECONFIGURED PER P480 BUILD	ECR/ECN	4/3/2021	BH
REV.	DESCRIPTION	ECR/ECN	DATE	BY
	REVISIONS			

DRAWN BY:
BH
DATE:
3/15/2021

DRAW #:
E70-0036-1

ITEM	NUMBER	DESCRIPTION	QTY.
1	02-100409	8/32 X 3/4" SCREW	2
2	02-301013	8-32" NUT	2
3	08-310000	PUMP PERISTAL TIC 230V 1/4" LINE	2
4	08-310001	PUMP BRACKET	1
5	2247-120	HOSE: TUBING 3/16"	2
6	2247-48	HOSE: TUBING 3/16"	2

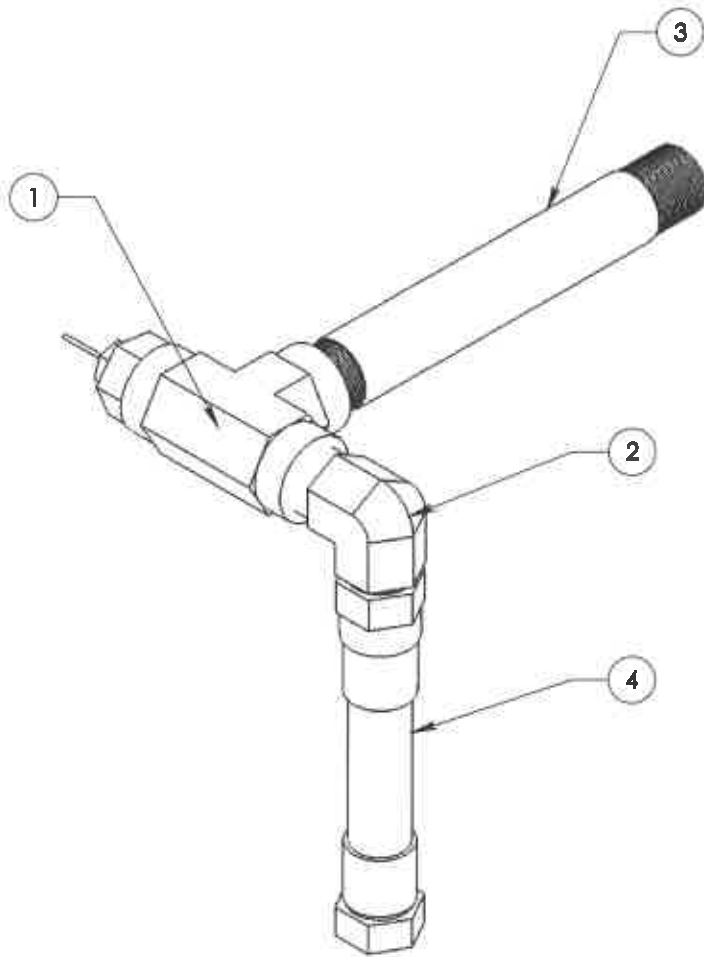


DESCRIPTION:
BETA PUMP ASSY

DESCRIPTION 2:
P450

REV.	DESCRIPTION	ECR/ECN	DATE	BY	DRAWN BY:	DATE	DRAW #:
A	ADDED 1 BETA PUMP & HOSES AND MOUNTING RAIL		6/3/2021	BH	NS	9/17/2012	E70-0037
	REVISIONS						

ITEM	NUMBER	DESCRIPTION	QTY.
1	01-161304	TEE, H.D. 1/2" PLATED	1
2	01-111313	ELBOW: 1/2" JIC X 1/2" MPT	1
3	01-282004	NIPPLE, 1/2" X 6", SCH 80, ZINC	1
4	11-133702	3/8 HOSE: IMPAC4000 - 37"	1



DESCRIPTION:
COIL OUTLET ASS'Y

DESCRIPTION 2:
PEM (P400)

DRAW #:

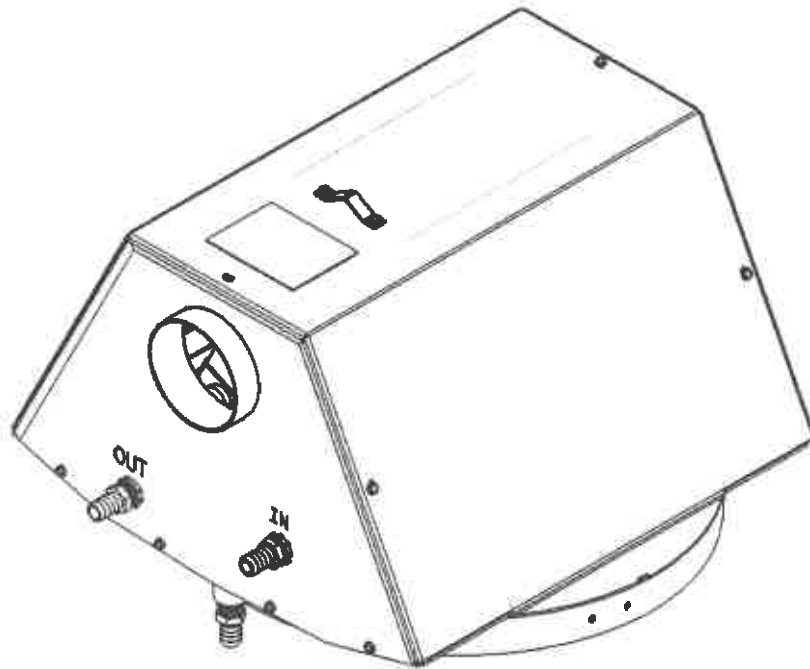
E70-0038

REV.	DESCRIPTION	ECR/ECN	DATE	BY
REVISIONS				

DRAWN BY: NS
 DATE: 09/14/12
 REV: - SHEET 1 OF 1

ITEM	NUMBER	DESCRIPTION	QTY.
1	01-161303	TEE, 1/2" STEEL, ZINC	2
2	01-411600	HOSE BARB, 1/2" NPT X 5/8"	3
3	01-411606	HOSE BARB 1/2 MPT X 5/8 BARB	2
4	01-411613	HOSE BARB 1/2 MPT X 5/8 X 90 DEG	2
5	01-451202	CLAMP: OETIKER 1" 256ZP	8
6	02-101402	SCREW, TEKS SS #10-16 3/4"	13
7	02-101700	MACH SCREW, #10-32 x 3/4"	2
8	02-301004	HEX NUT #10-32 NYLOC	2
9	03-191005	CONDUIT, LOCKING NUT 1/2"	2
10	1910-10P1875	SEAL: RUBBER 1/16" X 1/2" X 10 3/16"	4
11	1910-8	SEAL: RUBBER 1/16" X 1/2" X 8"	2

ITEM	NUMBER	DESCRIPTION	QTY.
12	2207-10P5	HOSE: 5/8" MULTI PURPOSE	1
13	2207-12	HOSE: 5/8" MULTI PURPOSE	1
14	2207-13	HOSE: 5/8" MULTI PURPOSE	1
15	2207-4P5	HOSE: 5/8" MULTI PURPOSE	1
16	26-000010	WARNING DECAL	1
17	B70-0082	RADIATOR STACK LIFT STRAP	1
18	B70-0386	EXHAUST END CAP WELDT 4" SST TUBE	1
19	B70-0389	FULL CONDENSATION PAN WELDT, SST TUBE	1
20	B70-0394	END CAP, EXCHANGE SST TUBE	1
21	B70-0395-HD	CORE RADIATOR ASSEMBLY, NO RIVNUTS	1
22	B70-0397	EXCHANGE LID	1
23	H70-0009	INSULATION STACK RING	1

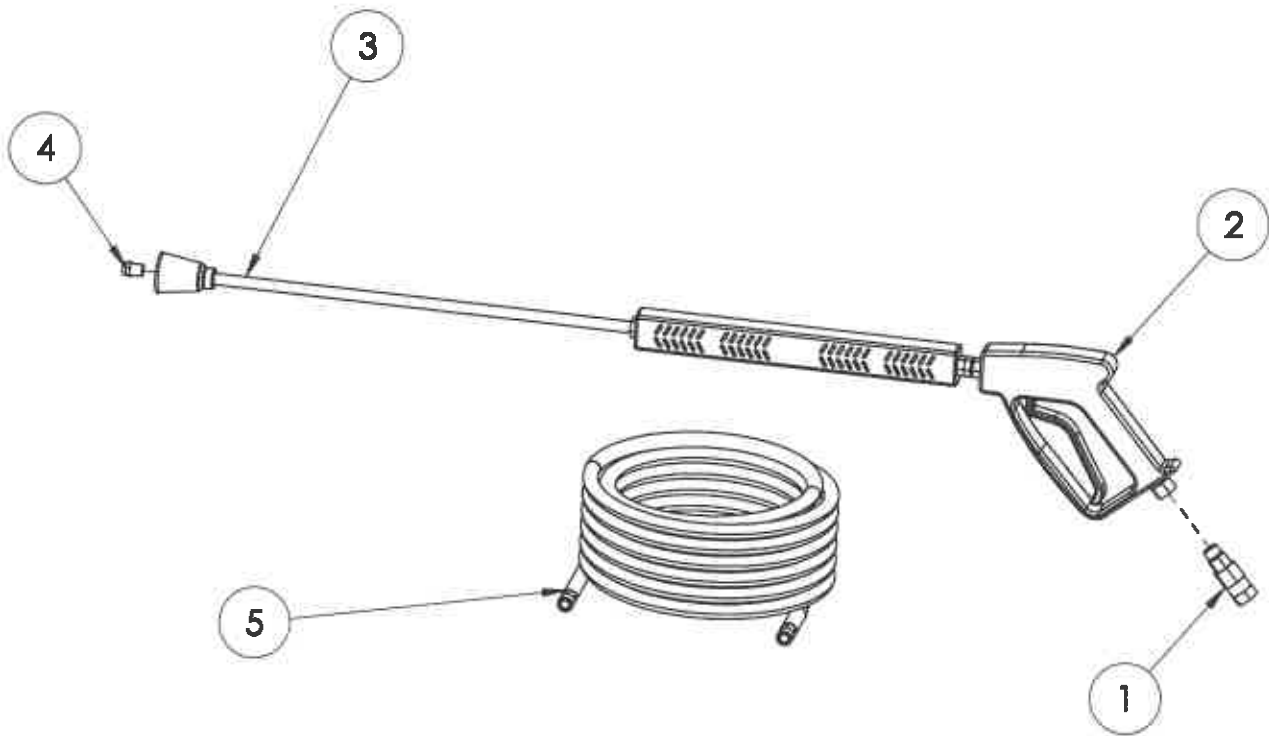


DESCRIPTION:
**EXCHANGE 70-SERIES 4"
 SST TUBE ASS'Y
 4/5/8/10GPM**
 DESCRIPTION 2:

DRAWN BY:
 BH
 DATE:
 10/14/2019

DRAW #
E70-0061-HD

ITEM	NUMBER	DESCRIPTION	QTY.
1	01-401405	SWIVEL 3/8" M x 3/8" F SS	1
2	06-152700	ST-2700 GUN SS RELAX AXTION	1
3	06-202300	LANCE 42" SS BL S3 INSULATED	1
4	06-415085	WASH JET 1508.5 1/4" MEG	1
5	11-115015	HOSE 3/8" X 50' WRPPD IMPAC 4000	1

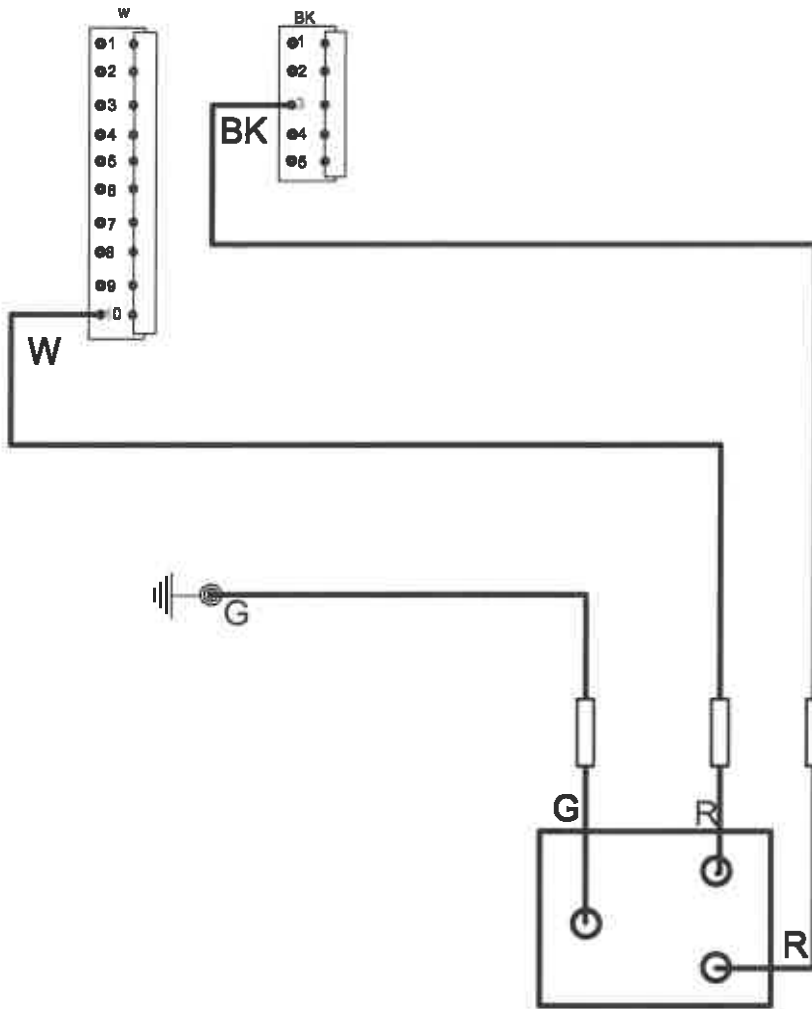


DESCRIPTION:
GUN/HOSE/TIP ASSY (PEM P-300)

DESCRIPTION 2:
(ST-2700 - LANCE 42" SS BL S3 INS)

DRAWN BY: LG
 DATE: 4/23/19

DRAW #:
EPEM5-0015



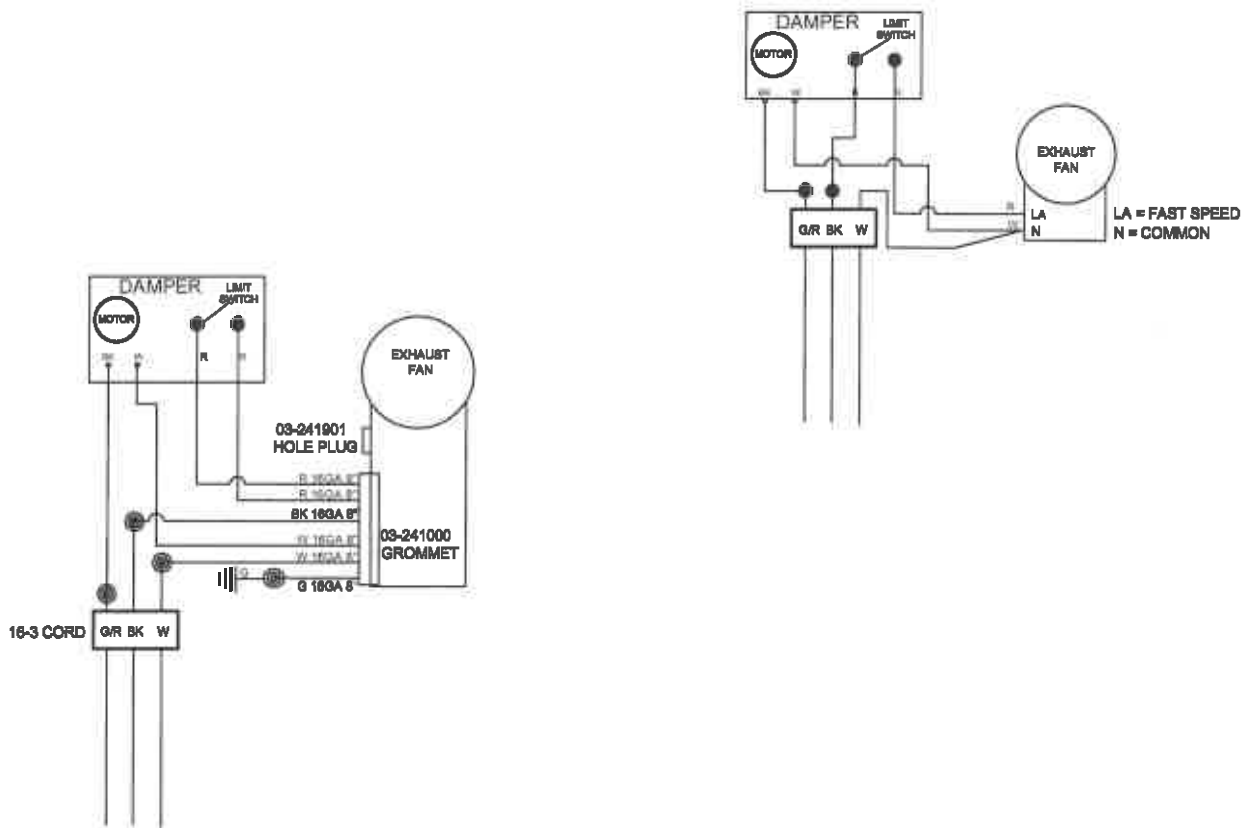
WATER SHUT-OFF

**K70-0002 WATER INLET SOLN. 71-SERIES
05-131404 SOLENOID, VALVE 24V(AC) 1/2"**

**K70-0003 WATER INLET SOLN. 72/73-SERIES
05-131405 SOLENOID, VALVE 24V(AC) 3/4"**

REV	DATE	BY	DESCRIPTION
A	7-25-2014	TL	WIRE COLOR CORRECTIONS
REVISIONS			

TITLE INLET SOLNIOD		
MODEL 71-72-73-000 SERIES		
DRAWN BY MT	DATE 7-13-2012	
		PART NUMBER F70-0091-0



QTY-1 03-241000 RUBBER GROMMET 7/16" ID

QTY-1 03-241901 HOLE PLUG 7/16" BLACK PLASTIC

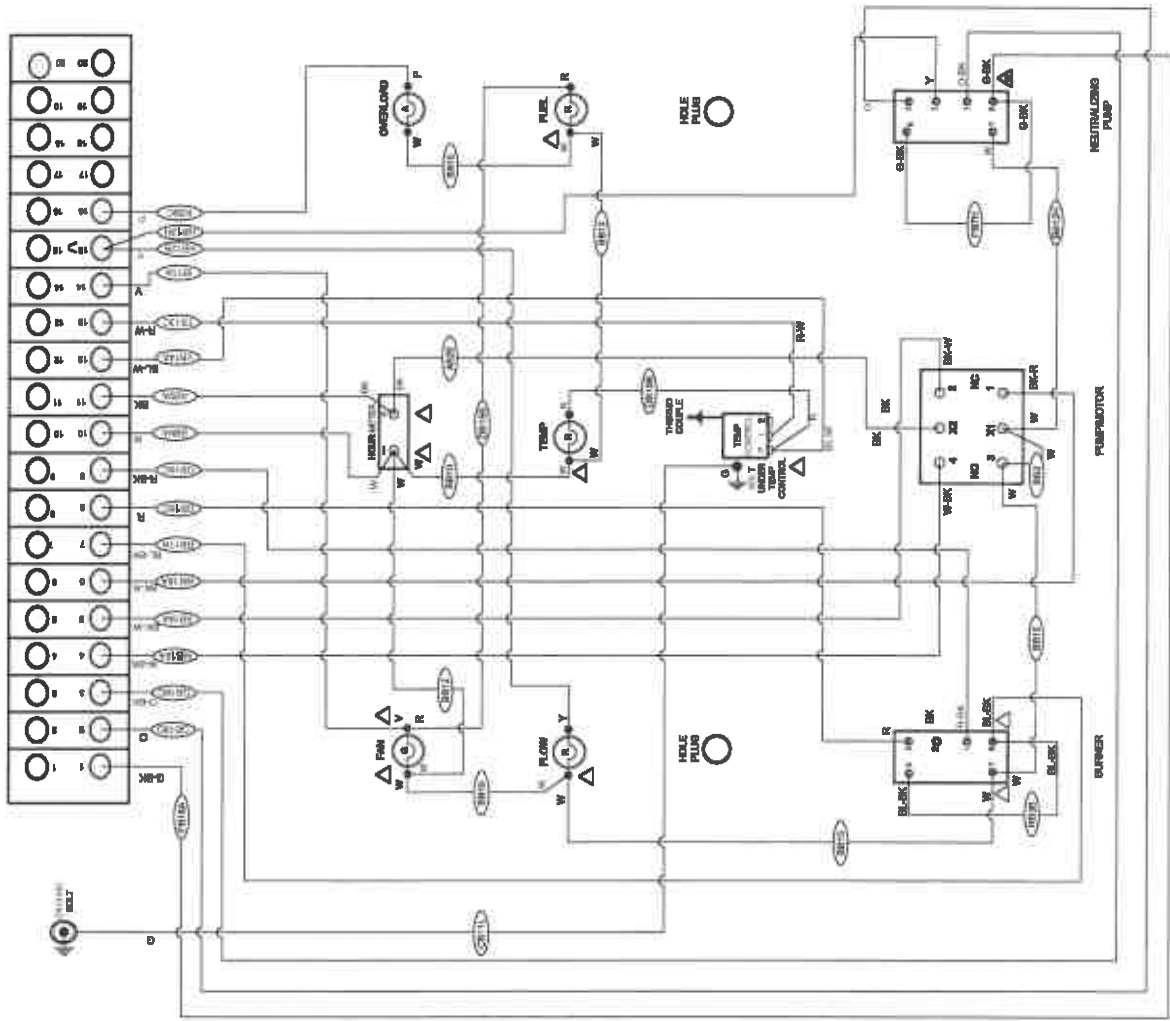
QTY-1 2132 WIRE: BLACK 16GA MTW X 8"

QTY-2 2136 WIRE: WHITE 16GA MTW X 8"

QTY-2 2137 WIRE: RED 16GA MTW X 8"

QTY-1 2141 WIRE: GREEN 16GA MTW X 14"

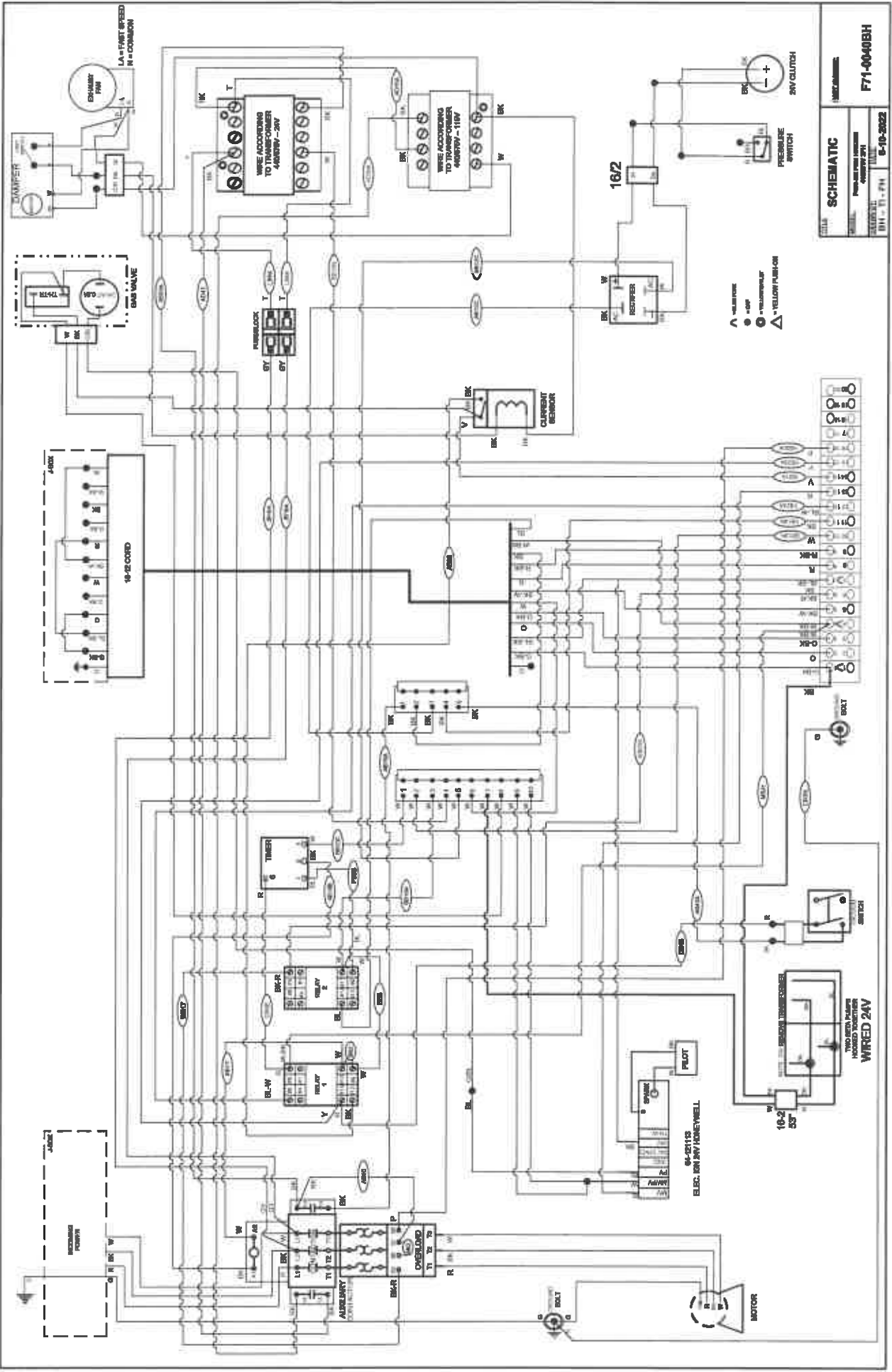
TITLE	
WIRING DIAGRAM	
MODEL: EXHAUST 4" MIXED FLOW INLINE DUCT FAN 71-000 SERIES	
DRAWN BY: CB - FH	DATE: 2-12-2020
PART NUMBER: 03-001208	



- △ - VALVE POSITION
- ▲ - VALVE POSITION
- ∇ - VALVE POSITION
- - VALVE POSITION

- WIRE COLOR LEGEND**
- BK = Black
 - W = White
 - G = Green
 - R = Red
 - BL = Brown
 - BLK = Blue
 - OR = Orange
 - Y = Yellow
 - V = Violet/Purple
 - GY = Grey
 - T = Tin
 - W-BK = White w/ Black Stripe
 - G-Y = Green w/ Yellow Stripe
 - R-BK = Red w/ Black Stripe
 - O-BK = Orange w/ Black Stripe
 - BL-BK = Blue w/ Black Stripe
 - W-Y = White w/ Yellow Stripe
 - G-V = Green w/ Violet Stripe
 - BL-V = Blue w/ Violet Stripe
 - W-R = White w/ Red Stripe
 - G-R = Green w/ Red Stripe
 - OR-R = Orange w/ Red Stripe
 - Y-R = Yellow w/ Red Stripe
 - V-R = Violet w/ Red Stripe
 - GY-R = Grey w/ Red Stripe

WIRING DIAGRAM	
NO. 1001	REV. 1001
DATE: 11/11	BY: 11/11/12
F71-0039	



SCHEMATIC
 MODEL: 64-50113
 SERIAL: 011 - 71 - 74
 DATE: 6-10-2022

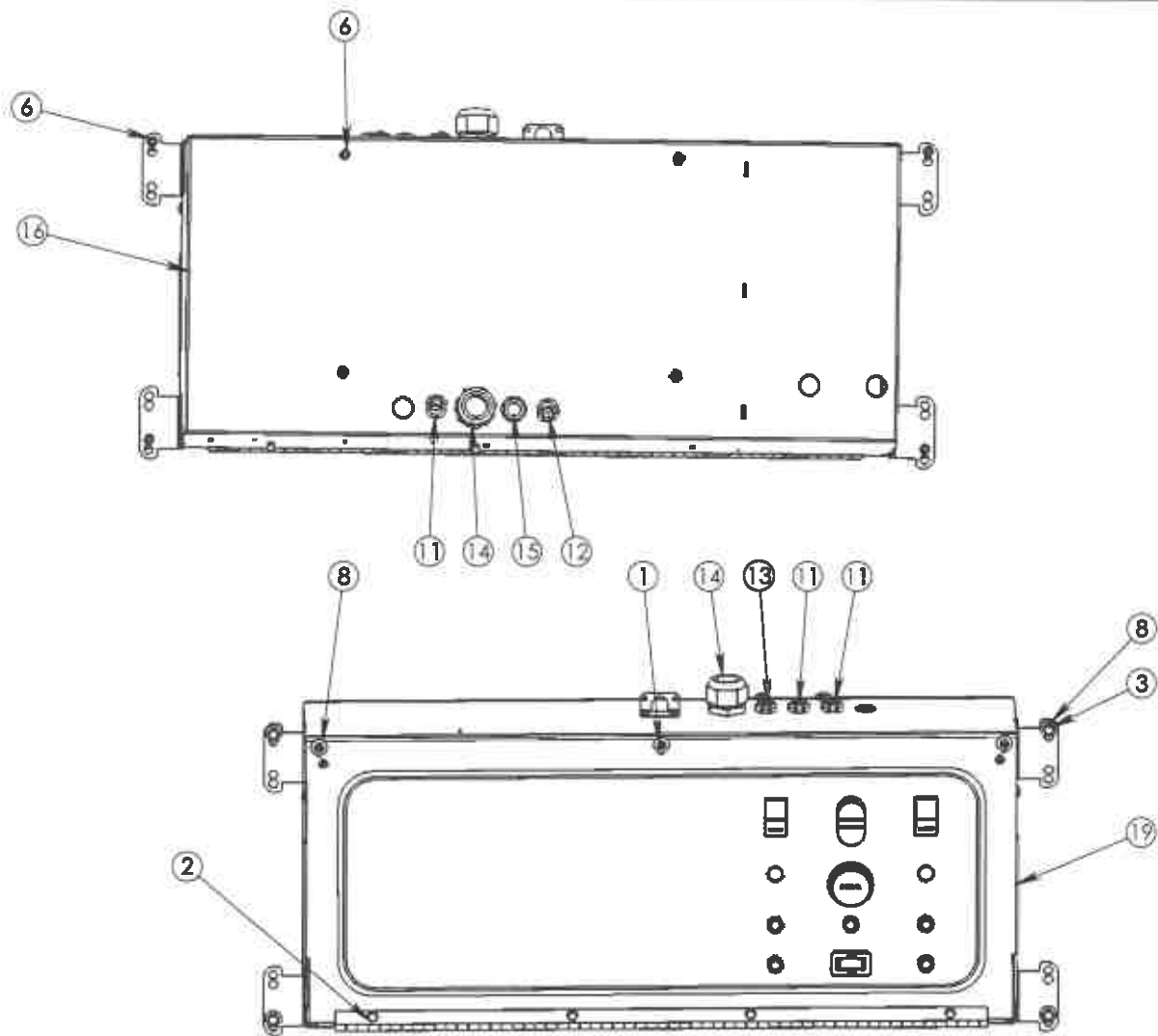
F71-0040BH

- ▲ 16/2 WIRE
- 16/2P
- YELLOW FLUOROCARBON
- △ YELLOW FLUOROCARBON

WIRING 24V

ITEM	NUMBER	DESCRIPTION	QTY.
1	02-100416	PHIL MACH SCREW 8/32X1/2	11
2	02-101600	SCREW 1/4"-14 x 3/4" KWIK	4
3	02-111100	CAPSCREW, 1/4-20 x 3/4	8
4	02-301000	HEX NUT: 8-32, ZINC	2
5	02-301020	RIVNUT:8-32" W/HEX	9
6	02-301106	RIVET NUT HEX 1/4"-20 UNC	8
7	02-501001	STAR WASHER	2
8	02-501100	WASHER: 1/4", FLAT, ZINC	9
9	02-522220	POP RIVET 5/32 X 1/2	8
10	03-181715	TERM STRIP 250V 20AMP	1
11	03-192000	CONNECTOR "K" ST BLACK	3

ITEM	NUMBER	DESCRIPTION	QTY.
12	03-192100	CONNECTOR "W" ST BLACK	1
13	03-192110	CONN. STRAIN RLF 31-2 SR31-2	1
14	03-192540	HEYCO CONN. CD29LA-BK 1 1/4"	2
15	03-241002	GROMMET (1/4" SOAP HOSE)	1
16	870-0043	ELECTRICAL BOX WELDMENT	1
17	870-0079	COMPONENT LIFT HOOK	1
18	870-0096	CONTROL BOX MTG. CLIP	4
19	F70-0159	CONTROL PANEL ASSY	1
20	F70-0160H	SUB PANEL ASSY P450-HE VAC SWITCH IN SOLN	1
21	F71-0039-WC	CODED WIRE ASSY	1
22	F71-0040-WC	CODED WIRE ASSY	1
23	F71-0046-1	CORD ASSY 71-523-C	1



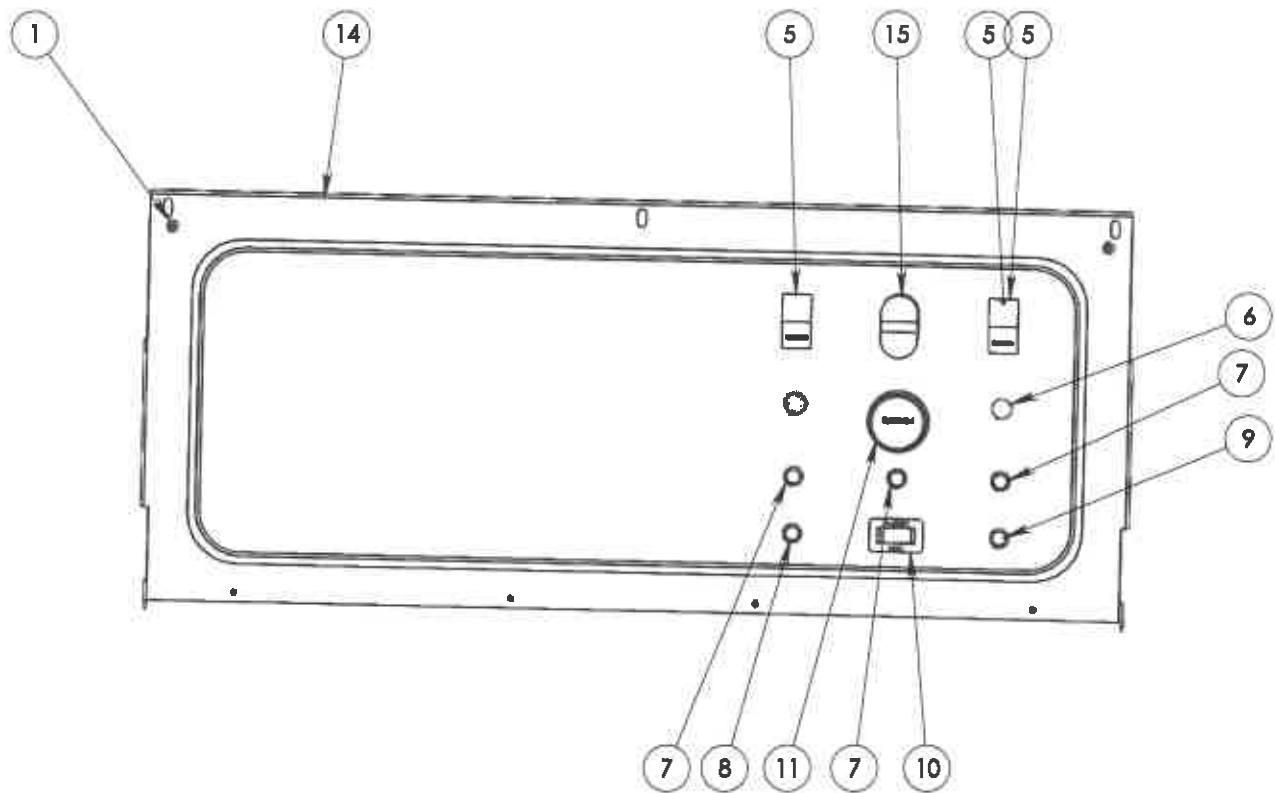
DESCRIPTION:
ELEC ASSY P450-HE VAC
SWITCH IN SOLN

DESCRIPTION 2:
440V 3PH 7.5HP CAT
CLUTCH HWEIGN DAMPER

DRAWN BY:
BH
DATE:
03/24/2021

DRAW #:
F70-0305AH

ITEM	NUMBER	DESCRIPTION	QTY.
1	02-100416	PHIL MACH SCREW 8/32X1/2	2
2	02-301000	HEX NUT: 8-32, ZINC	2
3	02-501001	STAR WASHER	2
4	03-181211	TERM, RING EYELETS NP	4
5	03-211323	ROCKER SWITCH 24 VOLT	2
6	03-242007	HOLE PLUG, BLACK PLASTIC	2
7	03-273027	INDICATOR LIGHT RED 28V	3
8	03-273037	INDICATOR LIGHT AMBER 28V	1
9	03-273047	INDICATOR LIGHT GREEN 28V	1
10	03-291020	HOUR METER	1
11	04-101448	THERMSTAT CTRL 250 DEG F	1
12	26-111671	DECAL	1
13	2132-13	BLACK WIRE: 16GA MTW	2
14	b70-0047	CONTROL PANEL	1
15	1-03-212005	STOP/START SWITCH 24V	1



DESCRIPTION:
CONTROL PANEL ASSY

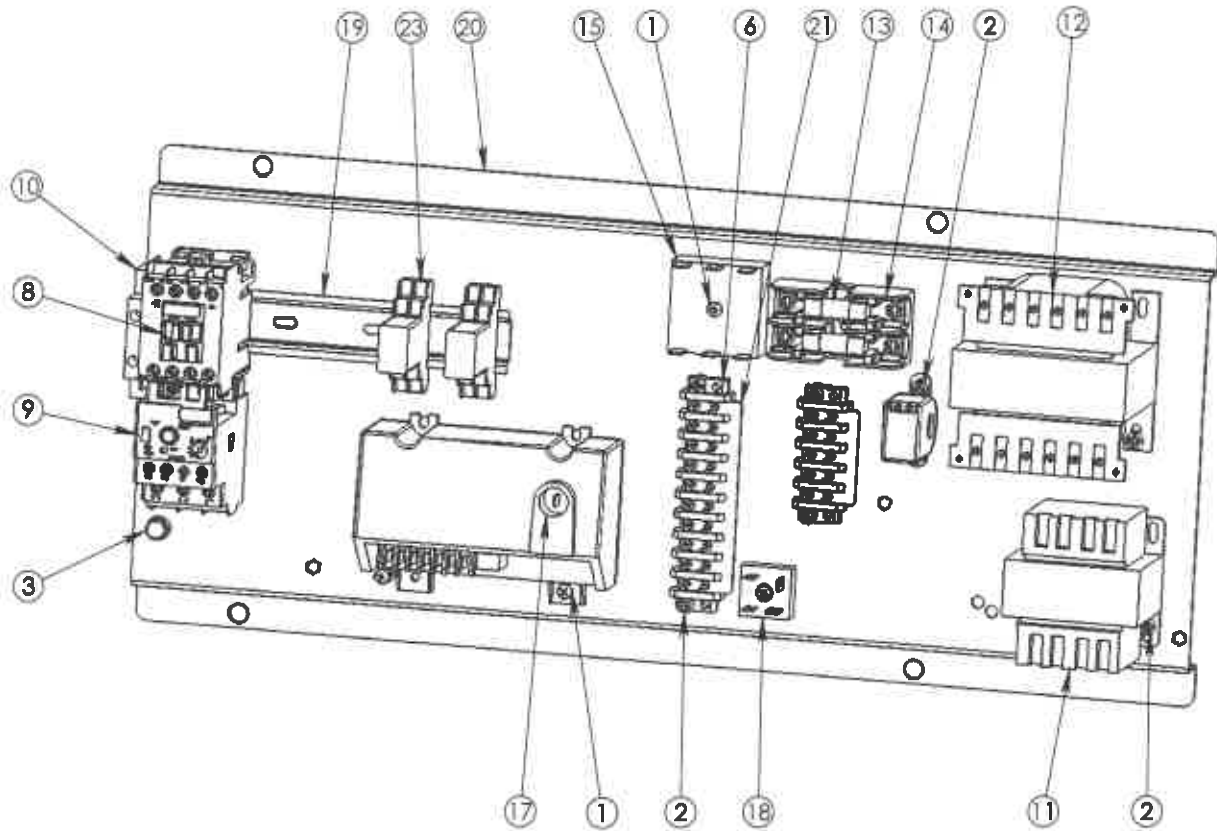
DESCRIPTION 2:
CAT CLUTCH 440V
3PH 7.5HP

DRAWN BY: LG
DATE: 4/30/13
REV.: -
SHEET 1 OF 1

DRAW #:
F70-0159

ITEM	NUMBER	DESCRIPTION	QTY.
1	02-100408	8/32 X 1" PAN HEAD	6
2	02-100416	PHIL MACH SCREW 8/32X1/2	13
3	02-111100	CAPSCREW, 1/4-20 x 3/4	1
4	02-301020	RIVNUT:8-32" W/HEX	19
5	02-301106	RIVET NUT HEX 1/4"-20 UNC	1
6	03-181713	TERM STRIP 250V 20AMP	1
7	03-181714	TERM STRIP 250V 20AMP	1
8	03-252002	CONTACTOR AB 100C23J10	1
9	03-252036	OVERLOAD AB 193-EEEE	1
10	03-252101	AUXILIARY CONT. B10 (NO)	1
11	03-261800	STEP DOWN TRANS KVA .05	1

ITEM	NUMBER	DESCRIPTION	QTY.
12	03-261910	STEP DOWN TRANS KVA .1	1
13	03-274023	FUSE 2 AMP (600V)	2
14	03-274106	FUSE BLOCK 600V 30 AMP 2P	1
15	03-291317	TIMER, ADJ, 24V, 2-60 MIN	1
16	04-101080	CURRENT SWITCH 30V	1
17	04-121113	ELEC. IGN 24V	1
18	09-501340	BRIDGE RECTIFIER	1
19	2509-7P5	DIN RAIL	1
20	B70-0046	ELECTRICAL SUB-PANEL	1
21	B70-0168	TERM STRIP COMB, 10-POS	1
22	B70-0169	TERM STRIP COMB, 5-POS	1
23	F01-0306	RELAY ASSEMBLY 24V	2



DESCRIPTION:
**SUB PANEL ASSY P450-HE
 VAC SWITCH IN SOLN**

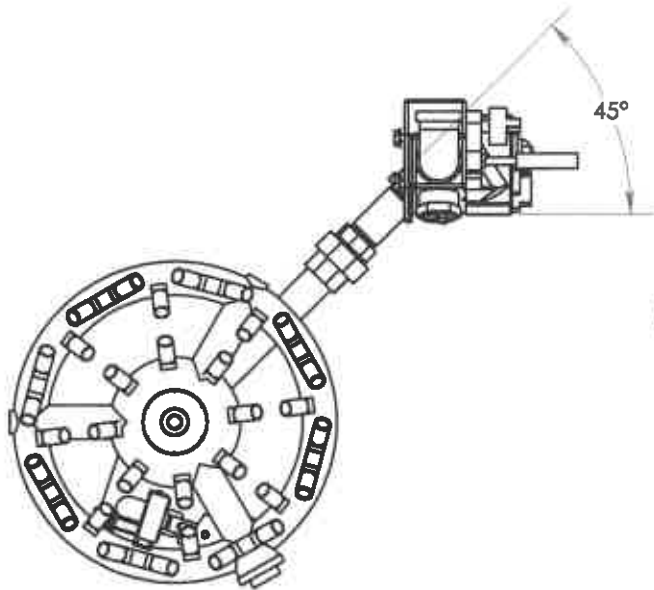
DESCRIPTION 2:
**440V 3PH 7.5HP CAT
 CLUTCH DAMPER**

DRAWN BY:
 BH
 DATE:
 06/10/2022

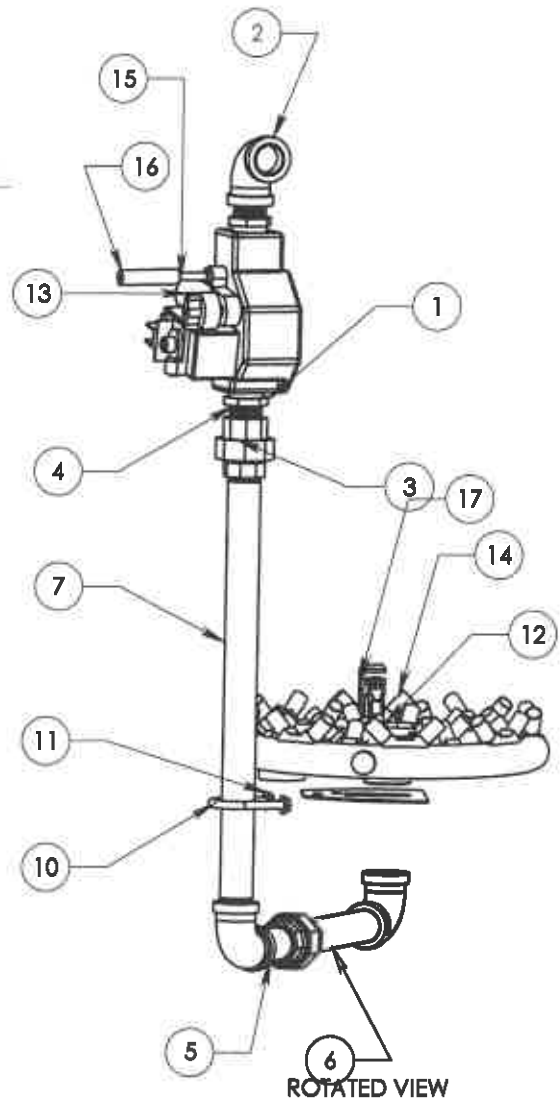
DRAW #:
F70-0160H

ITEM	NUMBER	DESCRIPTION	QTY.
1	01-102001	BUSH: 1 X 3/4 HEX BLACK	2
2	01-111401	ELBOW: 3/4 X 90 DEG BLACK	3
3	01-171401	3/4" PIPE UNION BLACK	2
4	01-291001	NIPPLE, CLOSE, 3/4", BLACK	2
5	01-291401	NIPPLE, 3/4" X 3", BLACK	1
6	01-292001	NIPPLE, BLACK, 3/4" X 6"	1
7	01-293205	NIPPLE, BLACK 3/4 X 15	1
8	02-101101	MACH SCREW #10-24 x 1/4	1

ITEM	NUMBER	DESCRIPTION	QTY.
9	02-111001	MACH SCREW 1/4-20 X 1/2	1
10	02-201000	U BOLT, 1/4"-20 X 2 1/4"	1
11	02-301100	NUT, HEX: 1/4-20, SERRATED	2
12	05-131351	PILOT ASSEMBLY	1
13	05-151006	VLV NG 24V 1 X 1" ELEC IGN	1
14	10-151100	NG,BNR,X-11 640JET,52 ORF	1
15	1051-40	TUBING: 1/4" RND ALUMINUM	1
16	2202-6	1/4" FUEL LINE HOSE	1
17	B03-0027-1	PILOT MOUNTING ANGLE	1
18	B70-0195	PILOT BAFFLE PLATE	1



TOP VIEW



ROTATED VIEW

REV.	DESCRIPTION	ECR/ECN	DATE	BY
D	ROTATED BURNER		5/6/15	LG
C	ADDED 2202-6	ECR-2013-0110	11/12/2013	NS
B	B03-0027-1 WAS B03-0027		6/19/2013	NS
A	1051-40 WAS 1051-37		1/25/13	LG

REVISIONS

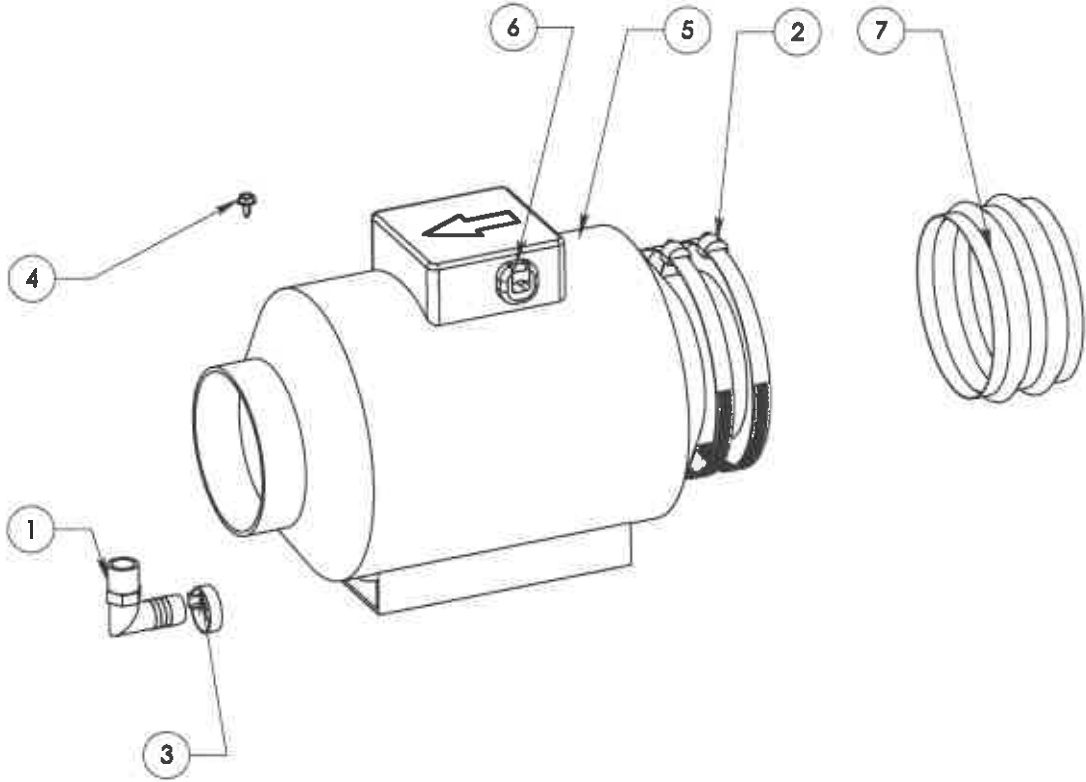
DESCRIPTION:
BURNER ASSY

DESCRIPTION 2:
NG

DRAWN BY:
BH
DATE:
5/16/2011

DRAW #:
G70-0001

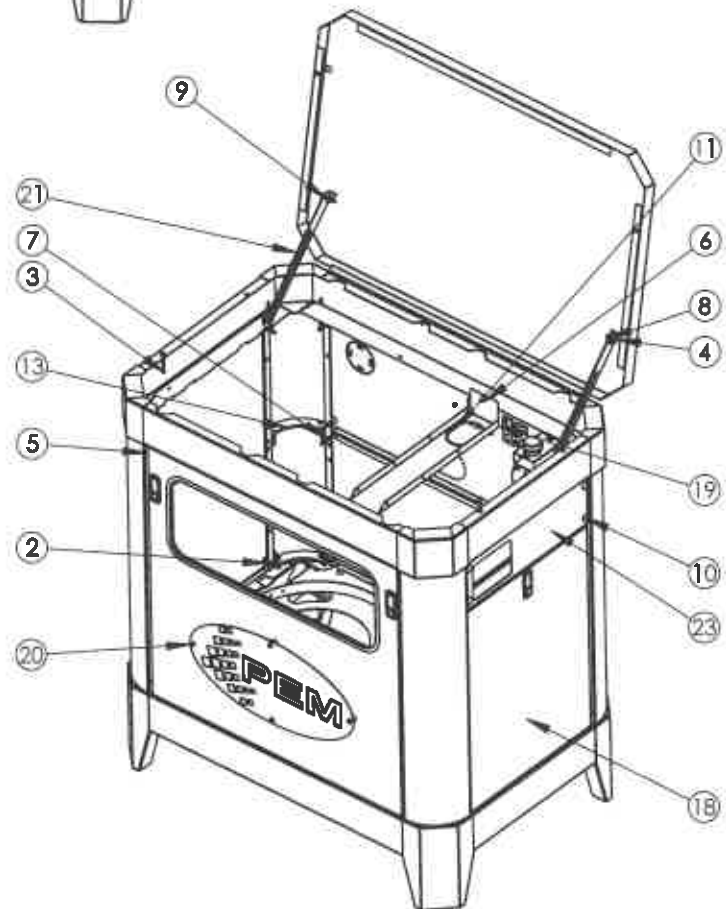
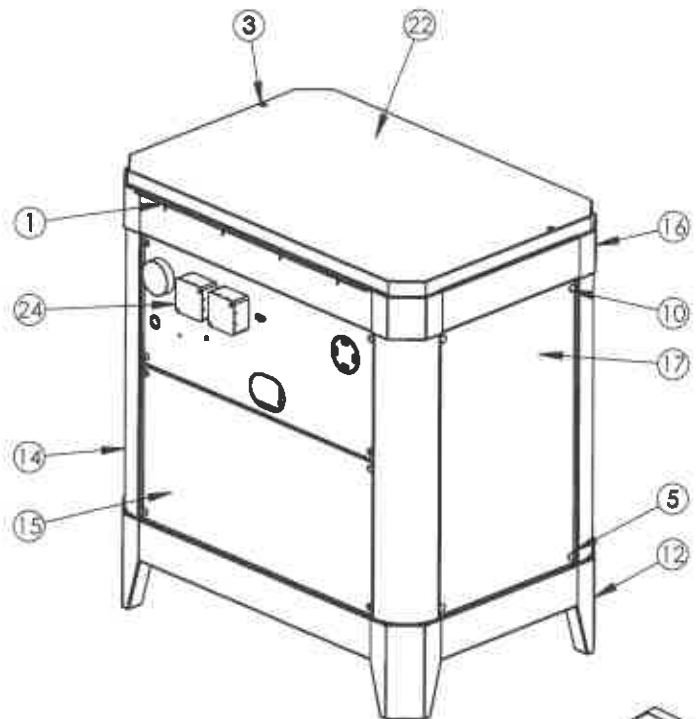
ITEM	NUMBER	DESCRIPTION	QTY.
1	01-411402	HOSE BARB 3/8NPT x 5/8 90DEG	1
2	01-451030	GEAR CLAMP	2
3	01-451202	CLAMP: OETIKER 1" 256ZP	1
4	02-101300	SCREW, TEKS #10-16 X 1/2"	1
5	03-001208	EXHAUST INDUCER	1
6	03-192000	CONNECTOR "K" ST BLACK	1
7	1920-24	DUCT HOSE 4" FLEXIBLE	1



REV.	DESCRIPTION	ECR/ECN	DATE	BY
D	01-411402 WAS 01-411407	ECR-2013-040	4/3/2013	NS
C	01-411407 WAS 01-411401, DELETED 2207-44, ROTATED VIEW		1/22/13	LG
B	01-411401 WAS 01-411600		12/10/2012	HS
A	01-411600 WAS 01-411400, 2207-44 WAS 2204-44, 01-451202 WAS 01-451006		8/9/2012	NS
REVISIONS				

DRAWN BY: BH	DATE: 9/9/2011	DESCRIPTION: EXHAUST ASS'Y DESCRIPTION 2: DRAW #: G70-0002
REV: D.03	SHEET 1 OF 1	

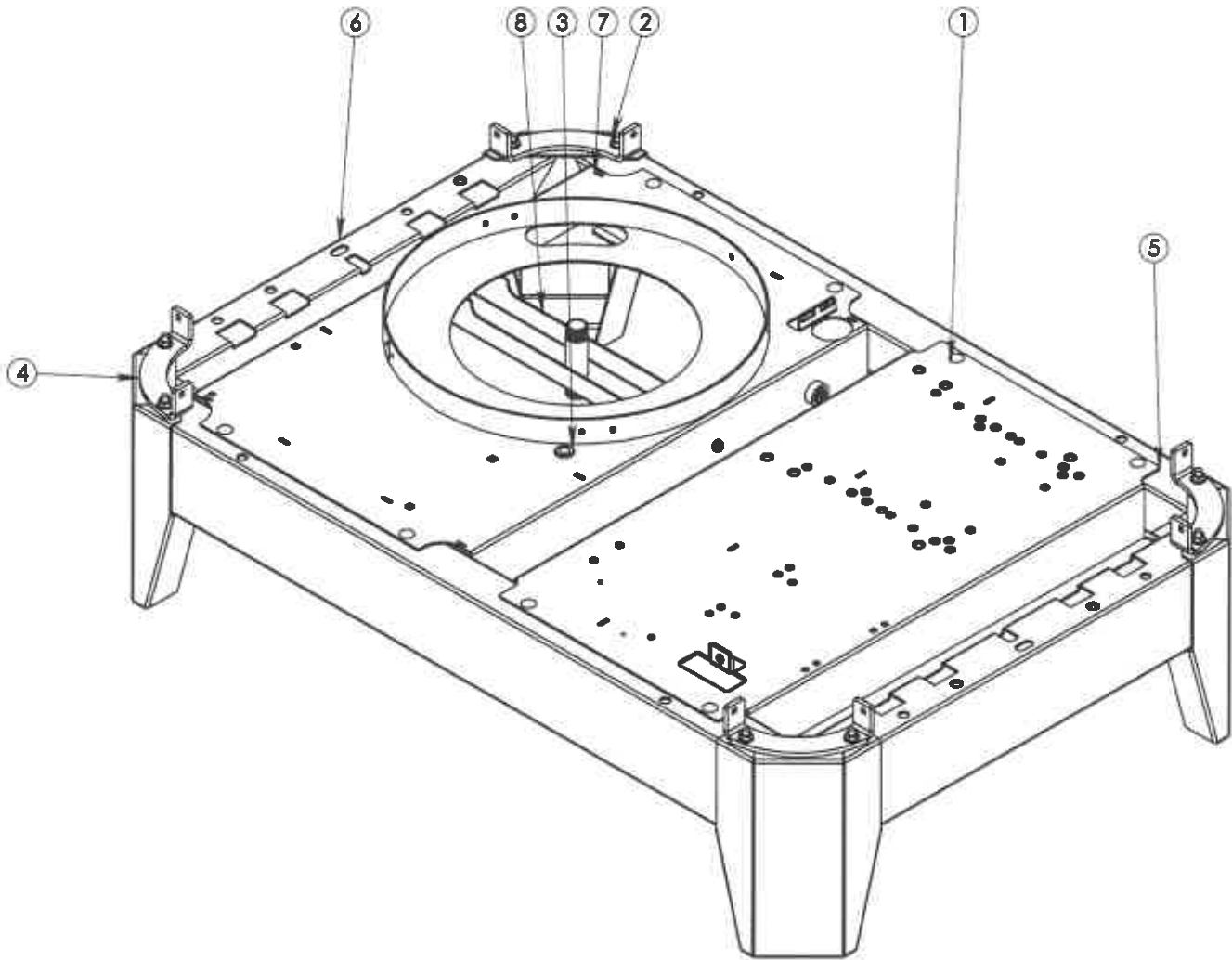
ITEM	NUMBER	DESCRIPTION	QTY.
1	02-101400	SCREW, TEKS #10-16 X 3/4"	4
2	02-111011	MACH SCREW 1/4-20 X 1 1/2	16
3	02-111012	MACH SCREW 1/4-20 X 2 1/2	2
4	02-111100	CAPSCREW, 1/4-20 x 3/4	4
5	02-111411	CARRIAGE BOLT 1/4"20-3/4	25
6	02-301100	NUT, HEX: 1/4-20, SERRATED	25
7	02-301106	RIVET NUT HEX 1/4"-20 UNC	18
8	02-301131	NUT, HEX: NYLK 1/4" SS	4
9	02-501101	WASHER: 1/4" FLAT SS	12
10	03-242006	HOLE PLUG, BLACK PLASTIC	8
11	1903-7	BULK ITEM 3/8" VINYL EDGING	1
12	B70-0001-1	LOWER FRAME SUB-ASSY, BLUE	1
13	B70-0007	CORNER POST END	4
14	B70-0008	CORNER POST	4
15	B70-0055-1	REAR ACCESS PANEL, BLUE	1
16	B70-0064-1	UPPER FRAME SUB-ASSY, BLUE	1
17	B70-0070-1	CHAMBER SIDE PANEL, BLUE	1
18	B70-0077-2	DRIVE DOOR ASSY, SHORT 71, BLUE	1
19	B70-0197	CABLE TRAY	1
20	B70-0238-1	FRONT DOOR ASSY, BLUE	1
21	B70-0376	70-SERIES LID SLIDE BAR	2
22	B70-0377-1	71-SERIES HINGED LID WELDT, BLUE	1
23	B70-0378-1	DRIVE SIDE DOOR TOP, SOLID 71, BLUE	1
24	B70-0401-1	REAR EXHAUST ASSY, SST TUBE 71-4&5 GALLON, BLUE	1



DESCRIPTION:
MACH. SUB ASSY DOOR & HINGE TOP, BLUE, 4&5 GALLON
 DESCRIPTION 2:
PEM - P450
 DRAW #:
X70-0009C

A	SHOWING NEW PEM LOGO		3/12/2021	BH	
REV.	DESCRIPTION	ECN/ECN	DATE	BY	DRAWN BY: LG
	REVISIONS				DATE: 10/28/2019

ITEM	NUMBER	DESCRIPTION	QTY.
1	02-121209	CARRIAGE BOLT 5/16"X18X1"	16
2	02-301200	5/16-18 ZINC SERRATED NUT	16
3	03-241000	GROMMET (FOR WASH JETS)	1
4	B70-0007	CORNER POST END	4
5	B70-0059	DRIVE PLATE WELDMENT	1
6	B70-0060-1	LOWER FRAME WELDMENT, BLUE	1
7	B70-0062	CHAMBER PLATE WELDMENT	1
8	B70-0246	BURNER MOUNT ASSEMBLY	1



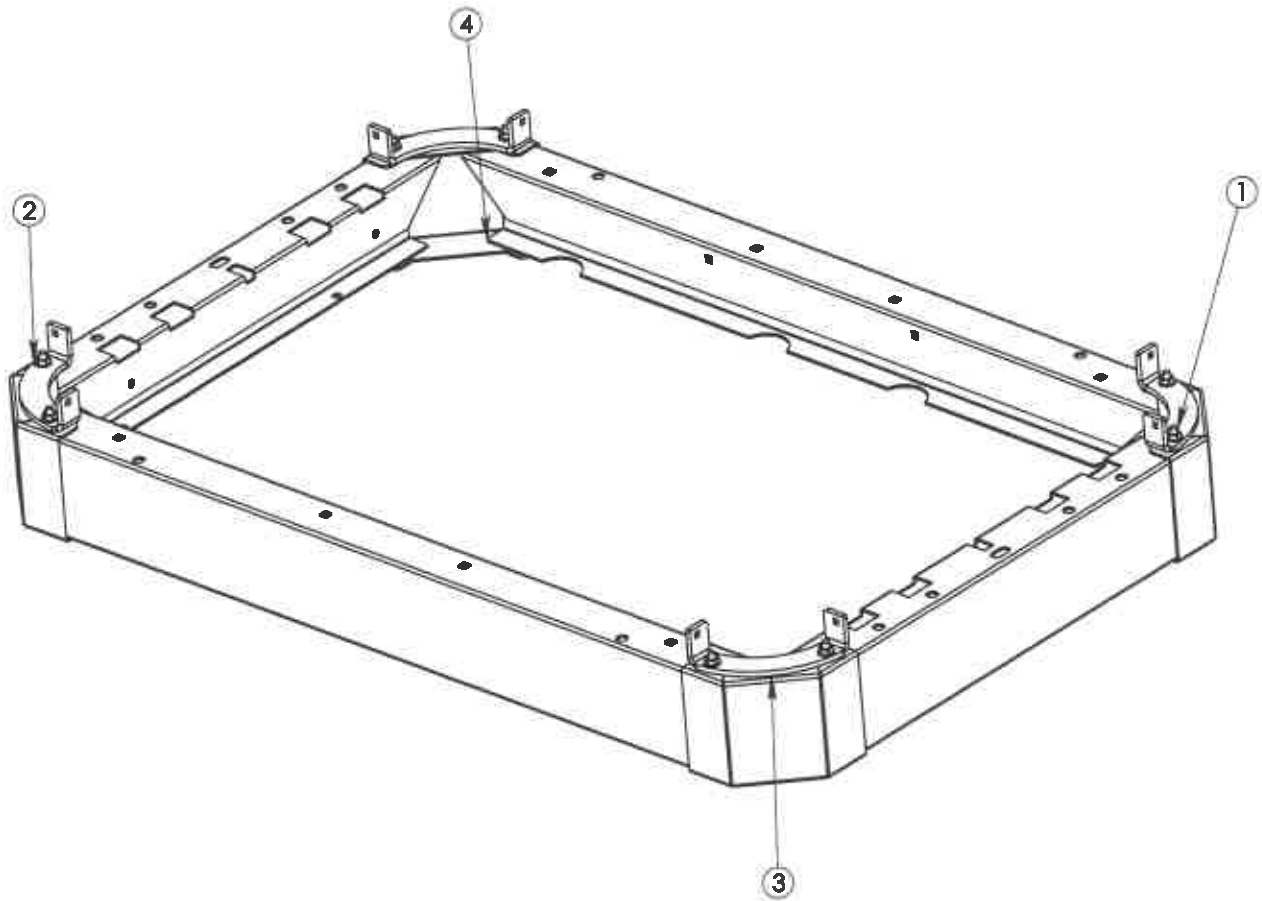
DESCRIPTION:
**LOWER FRAME SUB-ASSY,
 BLUE**

DESCRIPTION 2:
PEM BLUE

DRAWN BY:
 LG
 DATE:
 10/28/2019

DRAW #:
B70-0001-1

ITEM	NUMBER	DESCRIPTION	QTY.
1	02-121209	CARRIAGE BOLT 5/16"X18X1"	8
2	02-301200	5/16-18 ZINC SERRATED NUT	8
3	B70-0007	CORNER POST END	4
4	B70-0065-1	UPPER FRAME WELDMENT, BLUE	1



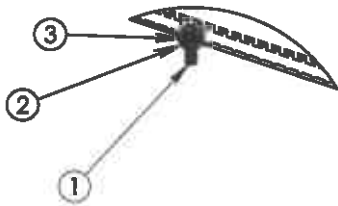
DESCRIPTION:
**UPPER FRAME SUB-ASS'Y,
 BLUE**

DESCRIPTION 2:

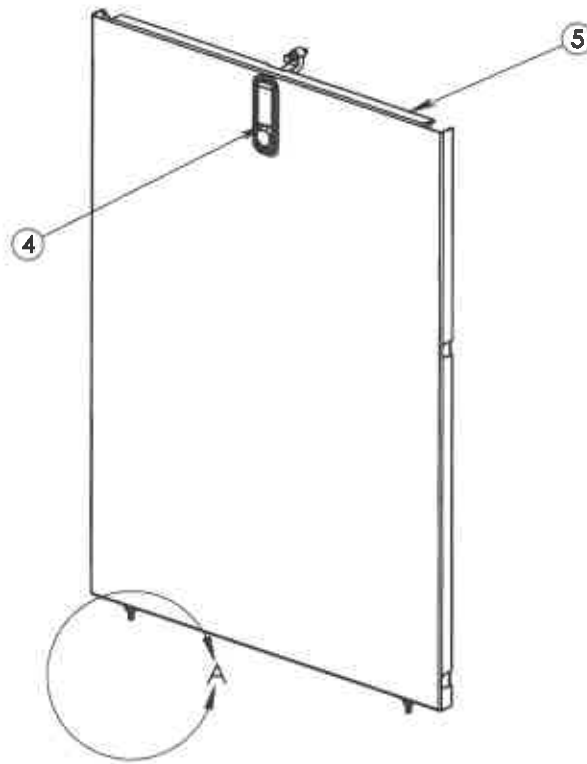
DRAWN BY:
 LG
 DATE:
 10/28/2019

DRAW #:
B70-0064-1

ITEM	NUMBER	DESCRIPTION	QTY.
1	02-111100	CAPSCREW, 1/4-20 x 3/4	2
2	02-301100	NUT, HEX: 1/4-20, SERRATED	2
3	02-511201	WASHER, LOCK PLATED 5/16"	2
4	02-525010	LATCH BLACK	1
5	B70-0379-1	DRIVE SIDE DOOR BOTTOM, 71 BLUE	1



DETAIL A
SCALE 1 : 4



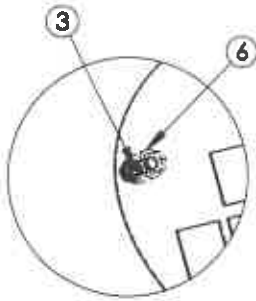
DESCRIPTION:
DRIVE DOOR ASS'Y, SHORT
71, BLUE

DESCRIPTION 2:

DRAWN BY:
LG-
DATE:
05/07/2018

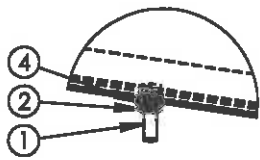
DRAW #:
B70-0077-2

ITEM	NUMBER	DESCRIPTION	QTY.
1	02-111200	CAP SCREW, 1/4-20 x 1 HEX	6
2	02-301100	NUT, HEX: 1/4-20, SERRATED	2
3	02-301160	NUT, ACORN HEX 1/4"	4
4	02-511201	WASHER, LOCK PLATED 5/16"	2
5	02-525010	LATCH BLACK	2
6	02-541069	PLASTIC SPACER 5/8"	4
7	1919-80	TRIM SEAL 1/16"	1
8	B70-0086-1	FRONT ACCESS DOOR, BLUE	1
9	B70-0426	HE PEM SIGN	1

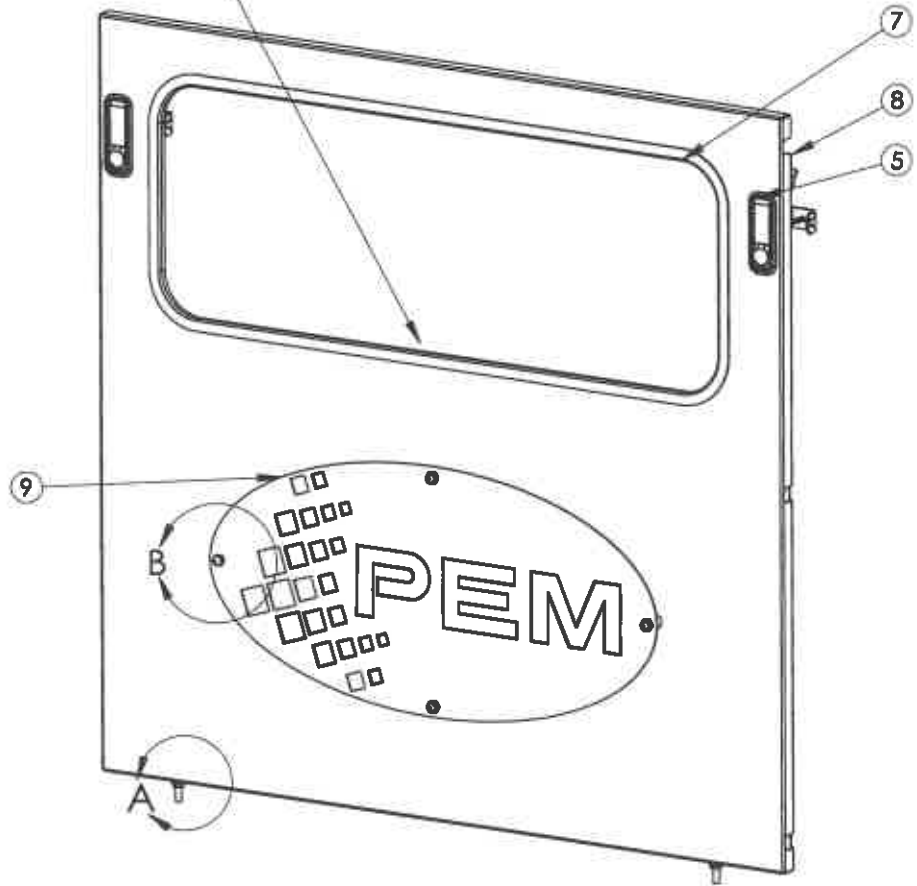


DETAIL B
SCALE 1 : 4

LOCATE
TRIM SEAM
IN MIDDLE



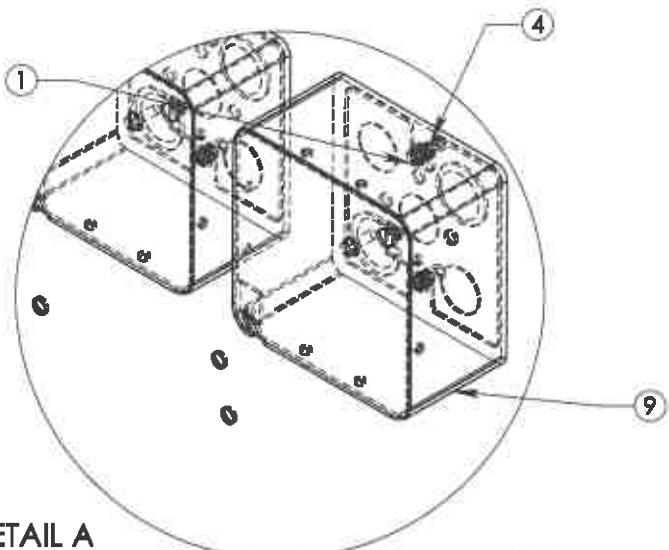
DETAIL A
SCALE 1 : 4



DESCRIPTION:
FRONT DOOR ASS'Y, BLUE

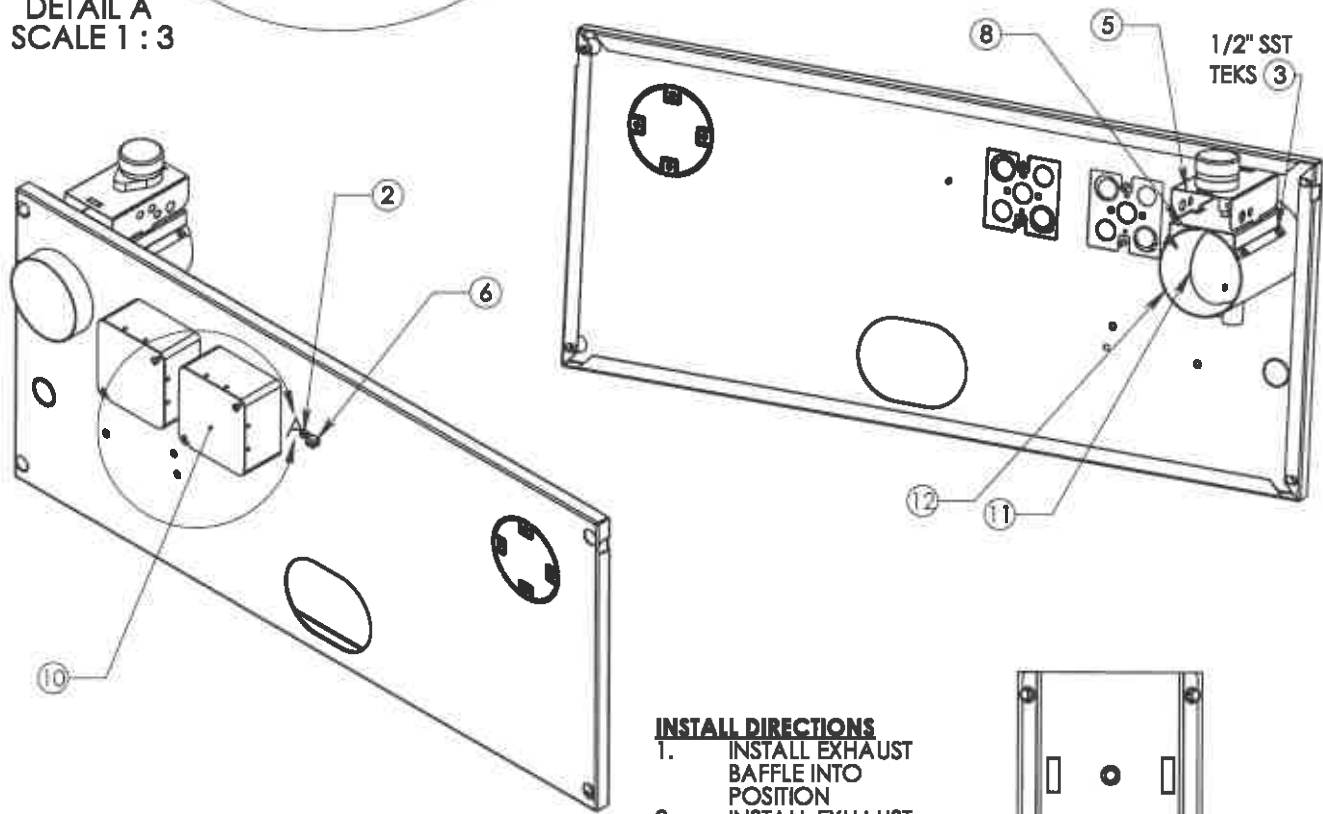
DESCRIPTION 2:
PEM

REV.	DESCRIPTION	ECR/ECN	DATE	BY	DATE	DRAWN BY	DRAW #
A	B70-0426 WAS B70-0239		3/12/2021	BH		IG	
	REVISIONS						B70-0238-1



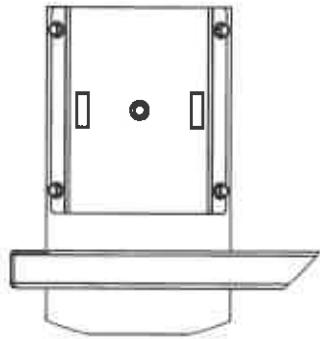
ITEM	NUMBER	DESCRIPTION	QTY.
1	02-101005	HEX HEAD WASHER BOLT 8-32 x 1/2"	4
2	02-101300	SCREW, TEKS #10-16 X 1/2"	1
3	02-101301	SCREW, TEKS #10-16 X 1/2" SST	4
4	02-301020	RIVNUT:8-32" W/HEX	4
5	03-001214	SP DAMPER MOTOR	1
6	03-181203	GROUND LUG, TERM SLDRLSS	1
7	26-001214	DECAL: DAMPER SET SCREW	1
8	B70-0294	DAMPER BRACKET 4" EXHAUST	1
9	B70-0368	HANDY BOX: 4" X 4"	2
10	B70-0369	J-BOX COVER: BLANK 4X4	2
11	B70-0402	EXHAUST BAFFLE WELD'T, 4" SST TUBE	1
12	B70-0404-1	REAR EXHUST WELD'T, 71/4" SST TUBE, BLUE	1

DETAIL A
SCALE 1:3



INSTALL DIRECTIONS

1. INSTALL EXHAUST BAFFLE INTO POSITION
2. INSTALL EXHAUST BRACKET INTO POSITION USING PILOT HOLES FOR LOCATION.
3. EXHAUST BAFFLE IS TO ROTATE FREELY WITHOUT TOUCHING EXHAUST BRACKET.



DESCRIPTION:
REAR EXHAUST ASS'Y, SST
TUBE 71-4&5 GALLON, BLUE

DESCRIPTION 2:

REV.	DESCRIPTION	ECR/ECN	DATE	BH BY	DRAWN BY	DATE	DRAW #:
A	REMOVED 03-241011 GROMMET DUE TO VENDOR PART CHANGE		6/16/2021	BH	LG	10/15/19	B70-0401-1
	REVISIONS						